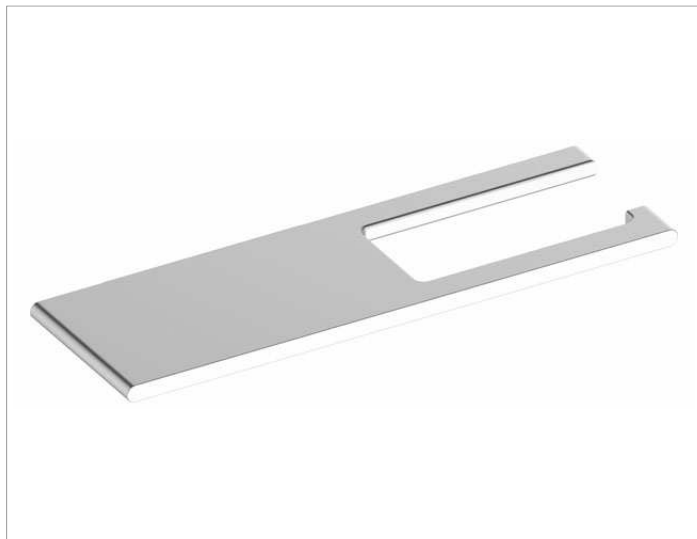


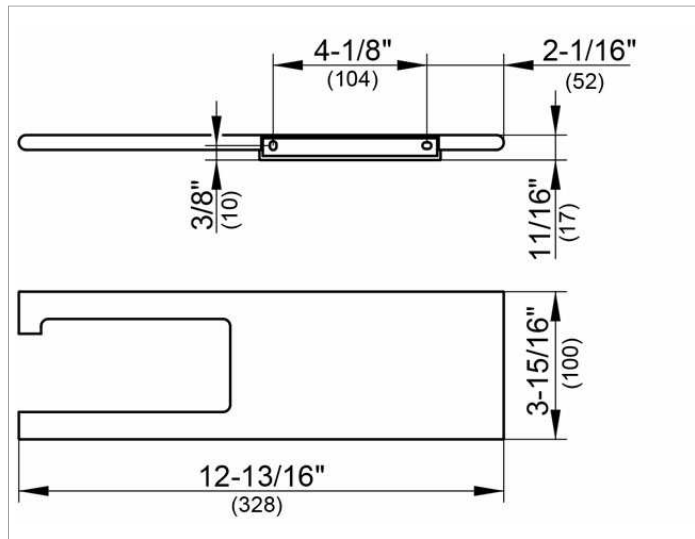
Edition 400

11573170000 Toilet paper holder

**PRODUCT**



**DRAWING**



**PRODUCT ATTRIBUTES**

with shelf, open form  
for 3-15/16 / 4-3/4 inch wide paper rolls

**SURFACE**

aluminium silver anodized (E6 EV1)

**SPECIFICATIONS**

KEUCO Edition 400 Toilet Paper Holder With Shelf, 11573170000  
Toilet paper holder made of solid aluminum, for roll width 3-15/16" / 4-3/4", with shelf space, e.g. for mobile phones and accessories, silver anodized (E6 EV1), wall model, with slightly rounded edges, width 12-13/16", thickness 3/8", depth 3-15/16", shelf 7-5/16" wide the toilet paper holder with shelf is concealed, delivery incl. corrosion-free mounting material

**Warranty:** KEUCO products are covered by a 5-year manufacturer's warranty, in effect from the date of purchase. During this time, proven product defects will be remedied free of charge. Warranty claims must be filed in writing, including a detailed description of the defect immediately after a defect has occurred. For a copy of our detailed product warranty policy, please contact us at [office-usa@keuco.com](mailto:office-usa@keuco.com).

**Installation:** KEUCO products must be installed by a qualified professional in accordance with the respective installation guidelines and any applicable federal / local building codes and regulations.