

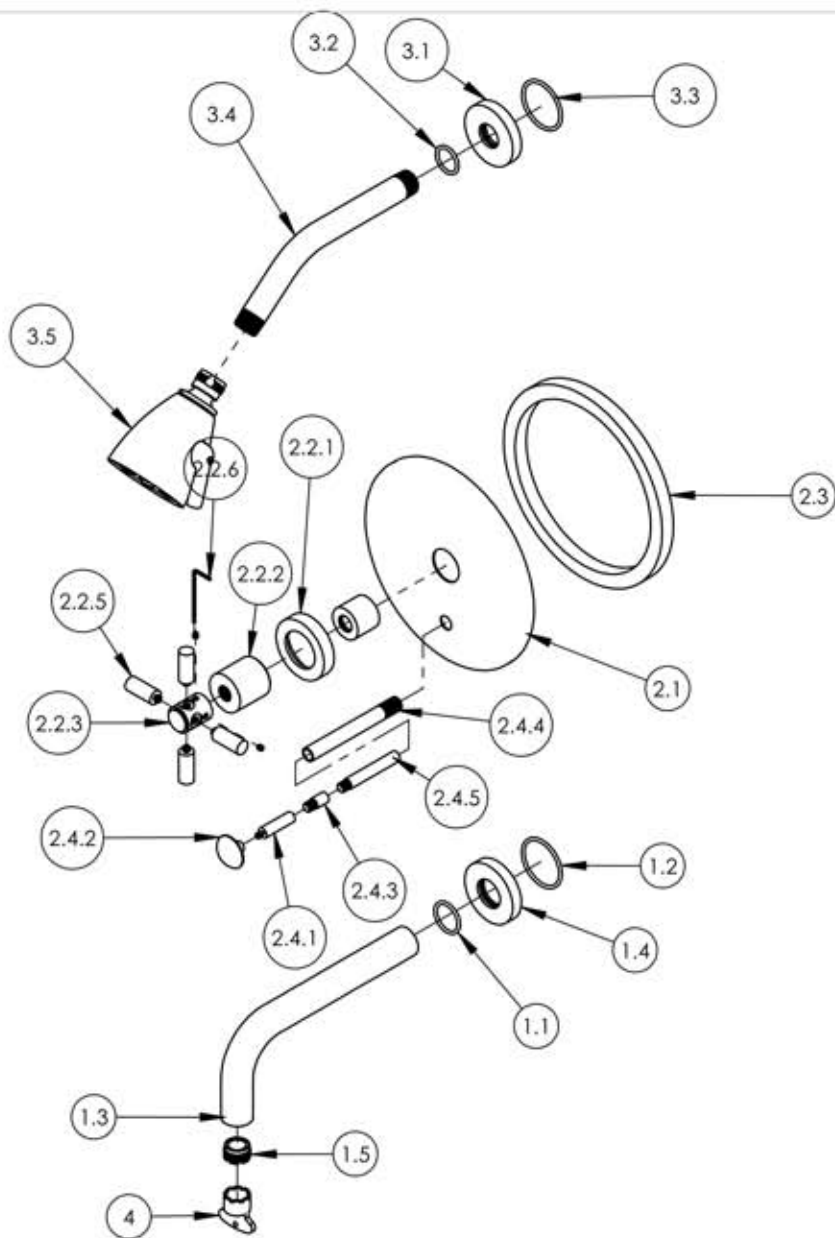
A

B

C

D

E



ITEM NO.	PART NUMBER	DESCRIPTION	QTY.
1	3-418/00	ASSY. 7 1/2" C-C WALL LAV. SPOUT, BASIC	1
1.1	90119	O-RING, 15/16"ID X 1-1/8"OD X 3/32"THK, AS-568-119	1
1.2	90129	O-RING, 1-9/16"ID X 3/32"THK, AS-568-129	1
1.3	P19018/00	WALL LAV SPOUT, BASIC SERIES	1
1.4	P19017/00	ESCUTCHEON, FOR SPOUT	1
1.5	P05024	AERATOR CACHE COIN SLOT, M21.5X1.0 FULL FLOW	1
2	4-019/00	PB PLATE W/ DIVERTER TUBULAR CROSS HANDLE, BASIC	1
2.1	P20017/00	PB TRIM PLATE, BASIC	1
2.2	3-186/00	TUBULAR CROSS HANDLE FOR DECK TUB, BASIC SERIES	1
2.2.1	11108/00	ESCUTCHEON LARGE ID FOR RT/PB, BASIC SERIES	1
2.2.2	11107/00	HUB LARGE FOR RT, BASIC SERIES	1
2.2.3	P01077/00	STEM, CROSS HANDLE	1
2.2.4	92008	SET SCREW, CUP POINT 8-32	2
2.2.5	P01075/00	LOBE, HANDLE CROSS BASIC	4
2.2.6	P39001	HEX KEY 5/64, FOR 8-32 SET SCREW	1
2.3	P35019	CC. NEPPREN SPONGE FOR K803 SHOWER FLANGE	1
2.4	3-125/00	EXTENSION ASSY FOR PB TUB & SHOWER SET	1
2.4.1	11008/00	DIVERTED STEM FOR PB PLATE	1
2.4.2	11006/00	PULL KNOB, DIVERTER, 10-24	1
2.4.3	11085/00	EXTENSION PIN FOR PB TUB & SHOWER SET	1
2.4.4	11009/00	EXTENSION SLEEVE FOR STEM, PB TUB & SHOWER SET	1
2.4.5	11007/00	EXTENSION PIN FOR PB TUB & SHOWER SET 1.25"LONGER	1
2.5	10986	CENTERING PLATE SLEEVE	1
3	4-024/00	SHOWER HEAD, BASIC	1
3.1	P16019/00	BASE SHOWER FLANGE, BASIC SERIES	1
3.2	90117	O-RING, 7/8"ID X 33/32"THK., AS-568-117	1
3.3	90129	O-RING, 1-9/16"ID X 3/32"THK, AS-568-129	1
3.4	P16008/00	SHOWER ARM (8 INCH)	1
3.5	P16014/00	SHOWERHEAD SIX JET	1
4	P05025	AERATOR, BASIC KEY, PLASTIC RED	1

ALL	A	UPDATED WITH SUB ASSEMBLIES	10/30/2015	GRE
ZONE	REV.	DESCRIPTION	DATE	APPROVED
REVISIONS				

REVISIONS		PROPRIETARY AND CONFIDENTIAL
1261 LOGAN AVENUE COSTA MESA, CALIFORNIA 92626 PHONE: 714.361.4800 FAX: 714.617.3120		THE INFORMATION CONTAINED IN THIS DRAWING IS THE SOLE PROPERTY OF RJS MANUFACTURING. ANY REPRODUCTION IN PART OR AS A WHOLE WITHOUT THE WRITTEN PERMISSION OF RJS MANUFACTURING IS PROHIBITED.

NEXT ASSY	USED ON
APPLICATION	
MATERIAL	
FINISH	
DO NOT SCALE DRAWING	

INTERPRET GEOMETRIC DIMENSIONING & TOLERANCING IN ACCORDANCE WITH ASME Y14.5-2009 & ASME Y14.41-2003 STANDARDS, UNLESS OTHERWISE SPECIFIED. DIMENSIONS ARE IN INCHES. TOLERANCES ARE:		
FRACTIONS	DECIMALS	ANGULAR
±1/64"	X.X: ±.1 X.XX: ±.01 X.XXX: ±.005	±.5°
NAME	DATE	
DRAWN	LLO	10/8/2015
CHECKED	GRE	

PRESSURE BALANCE TUB AND SHOWER SET, BASIC SERIES

SIZE	ASM/PRT NO.	REV
A	DPB2134/00	A
SCALE: 1:6	WEIGHT: lbs.	SHEET 1 OF 2

5

4

3

2

1