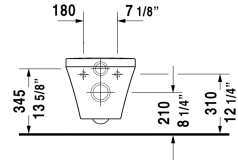
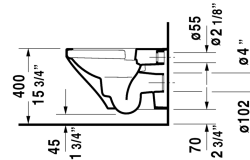
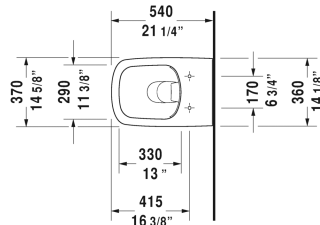


**DuraStyle Toilet wall-mounted Duravit Rimless® # 255109..92 / 255109..921**

| < 14 5/8" Inch > |



Toilet wall-mounted Duravit Rimless®	Dimension	Weight	Order number
rimless, cUPC listed, washdown model, Durafix included			
<b>Colors</b>			
00 White 20 HygieneGlaze (an antibacterial ceramic glaze that provides almost indefinite effectiveness)			
<b>Variant</b>			
◆ 1.6/0.8 gpf	14 5/8" x 21 1/4" Inch	63.3 lb	255109..92
◆ 1.6/0.8 gpf	14 5/8" x 21 1/4" Inch	63.3 lb	255109..921
<b>Infobox</b>			
Durafix for concealed fixation is included, In-wall tank & carrier and actuator plate required for installation / Refer to page XXX			
Hardware for wall-mounted bidet and wall-mounted toilet	Ø 1/2" x 7 1/8" Inch	0.4 lb	006500
Noise reduction gasket for wall-mounted toilet		0.7 lb	005064
Geberit in-wall tank and carrier width 19 3/4", depth 5 1/2" height (adjustable) 43" - 47"	19 3/4" x 5 1/2" Inch	38 lb	111335
Sigma 01 flush plate, dual flush White	9 5/8" x 6 1/2" Inch		115770
<b>Suitable products</b>			
Toilet seat and cover hinges stainless steel, without slow close,			006371
Toilet seat and cover hinges stainless steel, removable, with slow close,			006379

All drawings contain the necessary measurements which are subject to standard tolerances. They are stated in inch & mm and are non-binding. Exact measurements, in particular for customized installation scenarios, can only be taken from the finished ceramic piece.