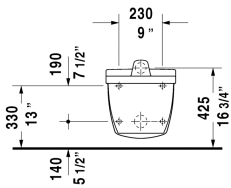
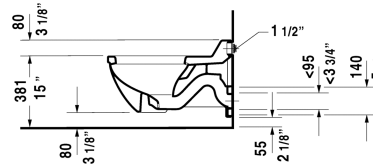
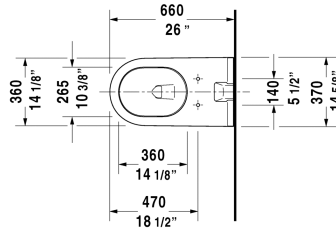


**Starck 3 Toilet wall-mounted # 2560090000**

**< 14 5/8" Inch >**



Toilet wall-mounted	Dimension	Weight	Order number
US-version toilet, concealed inlet, syphonic, includes inlet spud 1 1/2", horizontal outlet, cUPC listed, 1.28 gpf			
<b>Colors</b>			
00 White			
<b>Variant</b>			
◆	14 5/8" x 26" Inch	58.4 lb	2560090000
<b>Suitable products</b>			
Toilet seat ring elongated, open front, hinges plastic, without slow close,			006431
Toilet seat and cover open front, elongated, hinges stainless steel, without slow close,			006601
Toilet seat ring open front, elongated, hinges stainless steel, without slow close,			006211

All drawings contain the necessary measurements which are subject to standard tolerances. They are stated in inch & mm and are non-binding. Exact measurements, in particular for customized installation scenarios, can only be taken from the finished ceramic piece.