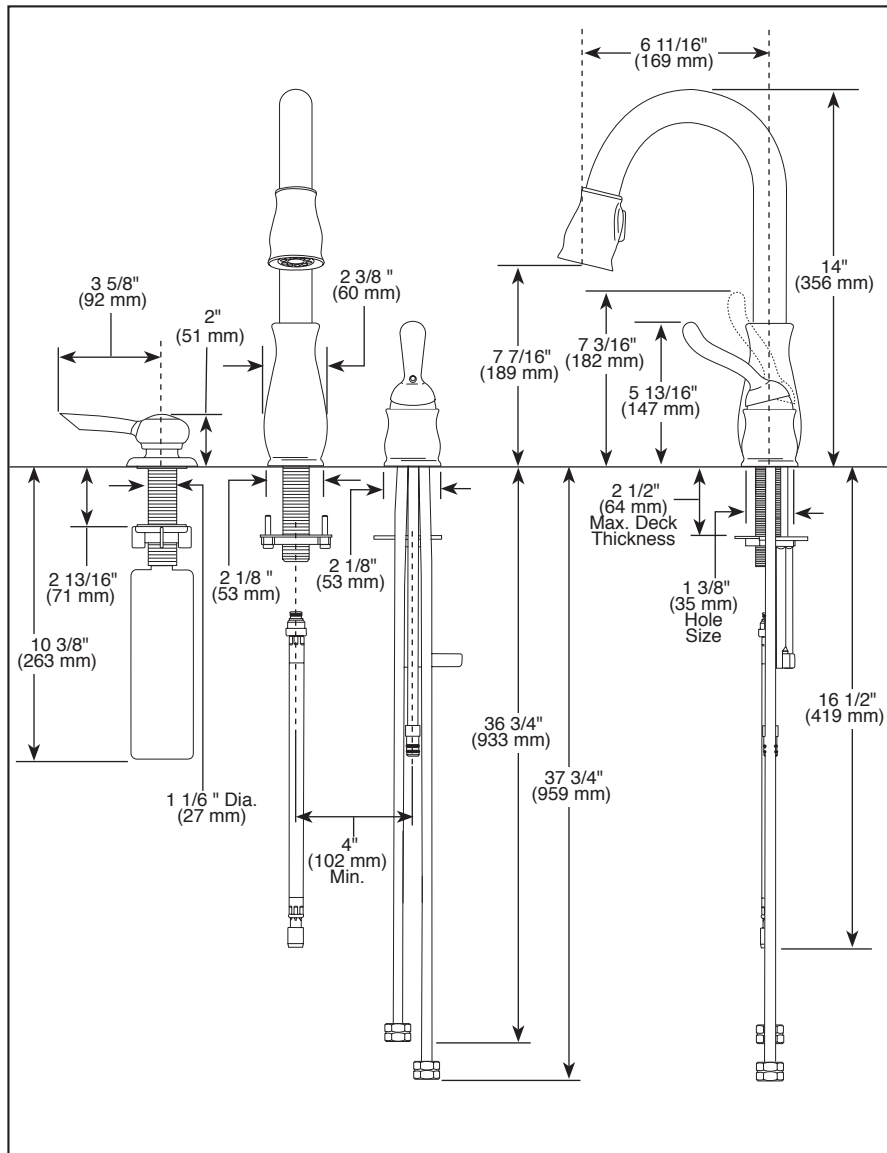


Submitted Model No.: \_\_\_\_\_  
 Specific Features: \_\_\_\_\_



# BAR / PREP SINK FAUCETS

- Leland® Collection
- Single Handle Widespread
- 2 Hole Sink Applications
- DIAMOND Seal® Technology
- Integrated Supply Tubes
- 2-Function Pull-Down
- MagnaTite® Docking System



## STANDARD SPECIFICATIONS:

- Single handle, 2-function pull-down kitchen faucets for exposed mounting on two hole sinks.
- 14" (356 mm) high, 6 11/16" (169 mm) long, spout swings 360°.
- Control mechanism shall be the diamond coated ceramic cartridge.
- Lever handle. Control shall return to neutral position when faucet is turned off.
- Finished handle button with red/blue graphics to indicate hot/cold temperature.
- Integral double check valves in sprayer assembly.
- Disposable hose lead to aid installation.
- Recommended hole size 1 3/8" (35mm) on 4" (102mm) centers.
- 3/8" O.D. straight, staggered pex supply tubes - 36 3/4" (934 mm) and 37 3/4" (959 mm) long.
- Touch-Clean® 2 function (stream spray) sprayhead.
- MagnaTite® docking system secures sprayer to spout.
- Maximum 1.80 gpm @ 60 psi, 6.8 L/min @ 414 kPa
- RP60734 wand assembly available with flow rate of Maximum 1.50 gpm @ 60 psi, 5.7 L/min @ 414 kPa

## WARRANTY

- Lifetime limited warranty on parts (other than electronic parts and batteries) and finishes: or, for commercial users, for 5 years from date of purchase.
- 5 year limited warranty on electronic parts (other than batteries); or, for commercial users, for 1 year from the date of purchase. No warranty is provided on batteries.

## COMPLIES WITH:

- ASME A112.18.1 / CSA B125.1
- ASME A112.18.6
- Indicates compliance to ICC/ANSI A117.1
- Verified compliant with .25% weighted average Pb content regulations.

Delta reserves the right (1) to make changes in specifications and materials, and (2) to change or discontinue models, both without notice or obligation. Dimensions are for reference only. See current full-line price book or [www.deltafaucet.com](http://www.deltafaucet.com) for finish options and product availability.

DSP-K-9978-DST Rev. D



55 E. 111th Street, Indianapolis, Indiana 46280  
 350 South Edgeware Road, St. Thomas, ON N5P 4L1  
 © 2015 Masco Corporation of Indiana