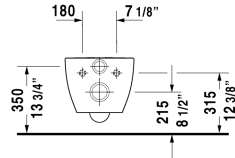
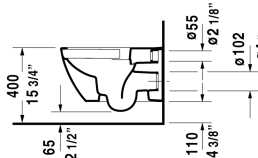
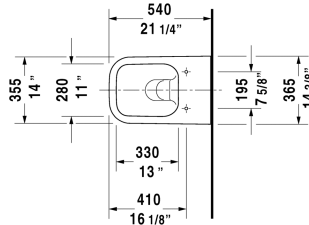


Happy D.2 Toilet wall-mounted Duravit Rimless® # 222209..92 / 222209..921

< 14 3/8" Inch >



| Toilet wall-mounted Duravit Rimless® | Dimension | Weight | Order number |
|---|------------------------|---------|--------------|
| rimless, cUPC listed, washdown model, Durafix included | | | |
| Colors | | | |
| 00 White 20 HygieneGlaze (an antibacterial ceramic glaze that provides almost indefinite effectiveness) | | | |
| Variant | | | |
| ◆ 1.6/0.8 gpf | 14 3/8" x 21 1/4" Inch | 59.1 lb | 222209..92 |
| ◆ 1.6/0.8 gpf | 14 3/8" x 21 1/4" Inch | 59.1 lb | 222209..921 |
| Infobox | | | |
| Durafix for concealed fixation is included, In-wall tank & carrier and actuator plate required for installation / Refer to page XXX | | | |
| Hardware for wall-mounted bidet and wall-mounted toilet | Ø 1/2" x 7 1/8" Inch | 0.4 lb | 006500 |
| Noise reduction gasket for wall-mounted toilet | | 0.7 lb | 005064 |
| Geberit in-wall tank and carrier width 19 3/4", depth 5 1/2" height (adjustable) 43" - 47" | 19 3/4" x 5 1/2" Inch | 38 lb | 111335 |
| Sigma 01 flush plate, dual flush White | 9 5/8" x 6 1/2" Inch | | 115770 |
| Suitable products | | | |
| Toilet seat and cover removable, hinges stainless steel, without slow close, | | | 006451 |
| Toilet seat and cover removable, hinges stainless steel, with slow close, | | | 006459 |

All drawings contain the necessary measurements which are subject to standard tolerances. They are stated in inch & mm and are non-binding. Exact measurements, in particular for customized installation scenarios, can only be taken from the finished ceramic piece.