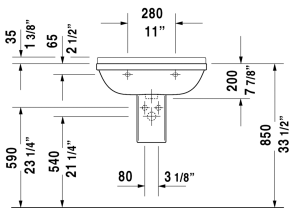
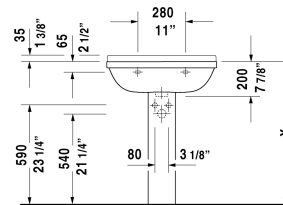
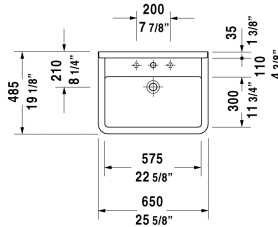


Starck 3 Washbasin & # 0300650000 / 0300650030

< 25 5/8" Inch >



Washbasin	Dimension	Weight	Order number
with overflow, with faucet deck, underside fully glazed, hardware included, wall-mounted, cUPC® listed*, 25 5/8" Inch			
Colors			
00 White			
Variant			
●	25 5/8" x 19 1/8" Inch	46.2 lb	0300650000
● ● ●	25 5/8" x 19 1/8" Inch	46.2 lb	0300650030
Infobox			
* Complies with following standards: ASME A112.19.2/CSA B45.1, Washbasin is not ADA compliant in combination with pedestal, siphon cover or metal console			
Sanitary ceramics with the special WonderGliss surface finish will remain clean and attractive-looking for a long time to come. When ordering WonderGliss please add a "1" as eleventh digit to the model number.			
Suitable products			
Pedestal for # 030065, 030060, 030055, 030410, 030480, 030470, 033213, 030760, 030750, 28" x 8 1/4" Inch	28" x 8 1/4" Inch		086516
Siphon cover for # 030065, 030060, 030055, 030410, 030480, 030470, 033213, 030760, 030750, 6 3/4" x 11 1/4" Inch	6 3/4" x 11 1/4" Inch		086515

All drawings contain the necessary measurements which are subject to standard tolerances. They are stated in inch & mm and are non-binding. Exact measurements, in particular for customized installation scenarios, can only be taken from the finished ceramic piece.