

*Complement  
your purchase  
with these  
fine accessories  
also from  
GINGER®:*

*Towel Bars*

*Towel Rings*

*Toilet Tissue Holders*

*Hooks*

*Soap Dishes*

*Tumbler Holders*

*Toiletry Shelves*

*Grab Bars*

*Mirrors*

*Lights*

*Bud Vases*

*Hotel Shelves*

*Shower Curtain Rods*

*Soap & Bottle Baskets*

*Cabinet Hardware*

**CANTERBURY**

1505, 1521, 1509, 1527

**CASSANDRA**

1405, 1421, 1409, 1427

**CHELSEA**

1105, 1121, 1109, 1127

**SUSSEX**

1705, 1709, 1727

**INSTALLATION INSTRUCTIONS**

for  
**TOWEL RING  
&  
HANGING  
TOILET TISSUE HOLDER**

**GINGER®**

2001 CARNEGIE AVE  
SANTA ANA CA 92705  
949-417-5207  
[www.gingerco.com](http://www.gingerco.com)

**GINGER®**

## INSTALLATION INSTRUCTIONS

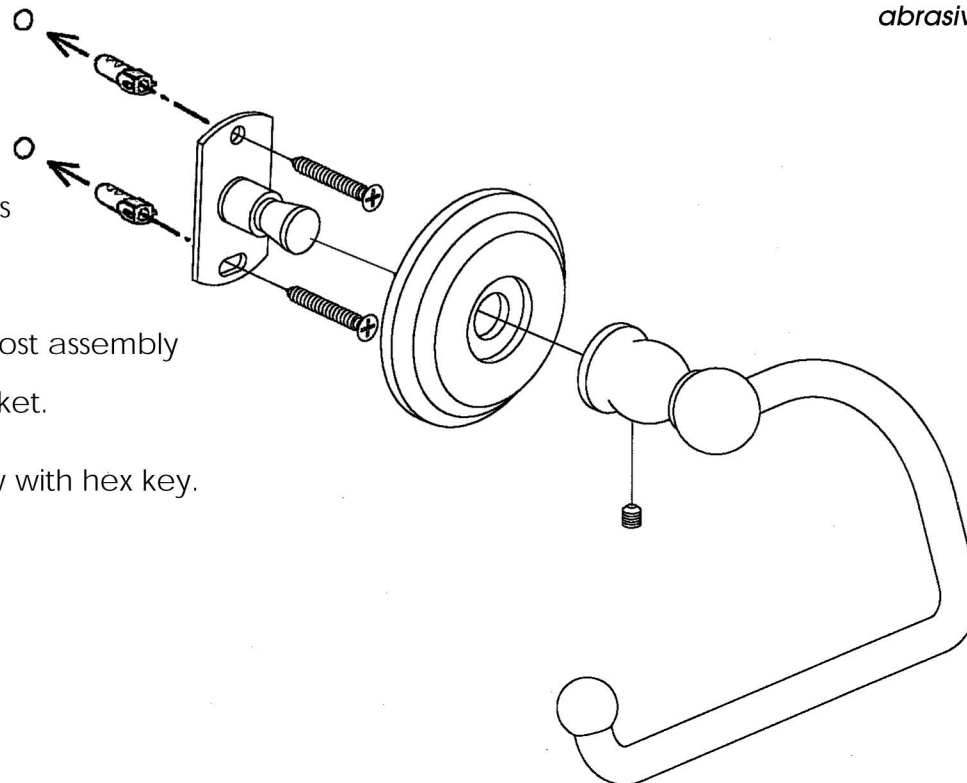
1. Trace screw hole positions for mounting bracket onto wall at desired mounting location.
2. Drill 3/16" (5mm) holes in drywall, 1/4" (6mm) in tile at screw hole marks.

Insert anchors and tap flush with wall.

3. Position mounting bracket over anchors and install screws.

4. Place rosette and post assembly over mounting bracket.

5. Tighten the set screw with hex key.



### CARE OF FINE BRASS

*The finish is protected with a clear, durable, baked-on enamel. To clean, use warm soapy water, and dry with a soft cloth. Occasional paste waxing is also recommended. NEVER use brass polish, abrasives or abrasive wax.*