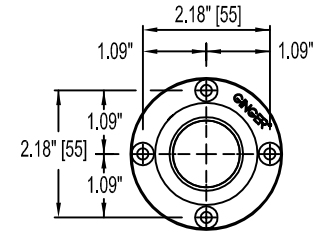
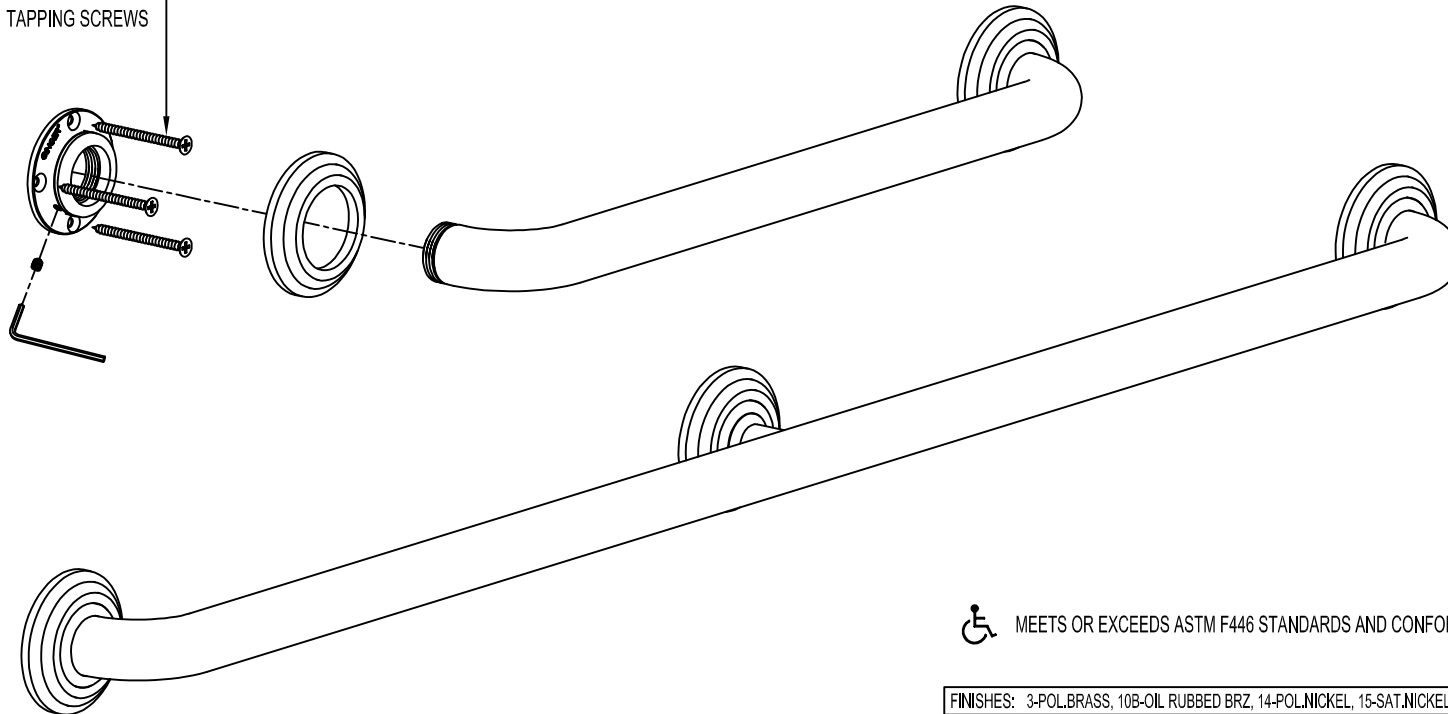


No. 10 x 2-1/2"
 STAINLESS STEEL
 TAPPING SCREWS



MOUNTING FLANGE DETAIL

CHELSEA GRAB BARS

LENGTH PART NO.

12"	1160
16"	1161
18"	1162
24"	1163
32"	1164
36"	1165
42"	1166
48"	1167

MEETS OR EXCEEDS ASTM F446 STANDARDS AND CONFORMS TO ADA GUIDELINES.

FINISHES: 3-POL.BRASS, 10B-OIL RUBBED BRZ, 14-POL.NICKEL, 15-SAT.NICKEL, 15A-ANT.NICKEL, 26-POL.CHROME, PVD-BRASS, 26/3-COMBO		GINGER
MATERIAL: FORGED BRASS ROSETTE, BRASS POST, PLATED STEEL HARDWARE		
PART NO.	1160~1167	WEIGHT: 2 LBS. 7 OZ. [1.1 KG.] 18"
DATE: 01.FEB.00		REV. 06.DEC.01
SCALE 1:5		STRAIGHT GRAB BARS
CHELSEA		DWG.NO. PD-1160