

ASSEMBLED CONFIGURATION

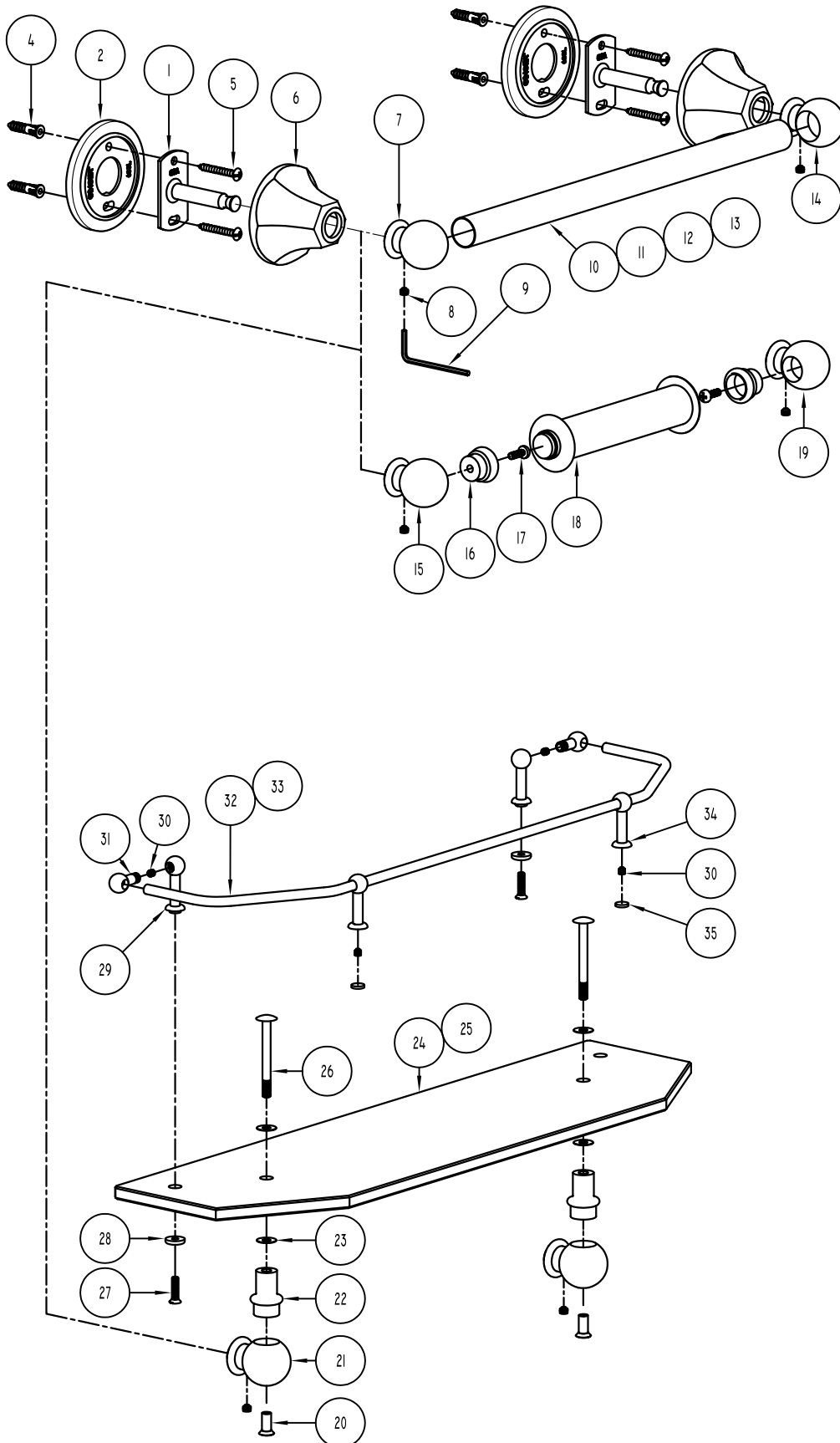
- 12" TOWEL BAR
- 18" TOWEL BAR
- 24" TOWEL BAR
- 32" TOWEL BAR
- DOUBLE-POST TOILET TISSUE HOLDER
- 18" GALLERY SHELF
- 24" GALLERY SHELF
- 18" TEMPERED GALLERY SHELF
- 24" TEMPERED GALLERY SHELF
- OPTIONAL LARGE ESCUTCHEON KIT, PAIR

PART NO.

- 601
- 602
- 603
- 604
- 608
- 635/18
- 635/24
- 635T/18
- 635T/24
- 600LK

GINGER®

EMPIRE DOUBLE POST ACCESSORIES



PARTS LIST

ITEM	PART NAME	PART NO.
1	LARGE MOUNTING BRACKET	6XXA
2	LARGE ESCUTCHEON	600L
4	PLASTIC WALL ANCHOR	CA
5	NO 8 X 1-1/4" TAP SCREW	8-1.2CPZ
6	LARGE HEXAGONAL CONE	600A
7	TOWEL BAR POST LEFT	1202PL *
8	M5 X 3.5 SET SCREW	SM5-3.5S
9	2-1/2 MM HEX KEY	M2.5HK
10	3/4" X 12" BAR	0951 *
11	3/4" X 18" BAR	0952 *
12	3/4" X 24" BAR	0953 *
13	3/4" X 32" BAR	0954 *
14	TOWEL BAR POST RIGHT	1202PR *
15	TOILET TISSUE POST LEFT	1208PL
16	TISSUE ROLLER RECEIVER	1208R
17	M4 X 12 SCREW	M4-12PPZ
18	ROLLER ASSEMBLY **	1108TN
19	TOILET TISSUE POST RIGHT	1208PR
20	FINISHING NUT	34N
21	GLASS SHELF POST	635P *
22	SHELF RISER	635R *
23	CLEAR WASHER	34CW
24	18" SHELF GLASS TEMPERED	635/18SCL 635/18TSCL
25	24" SHELF GLASS TEMPERED	635/24SCL 635/24TSCL
26	FINISHING SCREW	635S
27	M4 X 16 SCREW	M4-16PFS
28	FINISHING WASHER	35W *
29	RAIL END POST	35EP *
30	M4 X 4 SET SCREW	SM4-4S
31	PIVOT PIN	35PP *
32	18" RAIL	635R/18 *
33	24" RAIL	635R/24 *
34	RAIL POST	35RP *
35	BUMPER	35B

** SEE CHELSEA FOR PARTS BREAKDOWN

* REQUIRES FINISH CODE

- EMPIRE FINISHES:**
- 3 POLISHED BRASS
 - 10B OIL-RUBBED BRONZE
 - 14 POLISHED NICKEL
 - 15 SATIN NICKEL
 - 26 POLISHED CHROME