

## Features

- Solid metal construction
- Straight rod design
- Concealed, twin stainless steel mounting brackets
- O-ring stabilizers hold rod securely to brackets
- Complements Lineal product series

## Codes / Standards Compliance

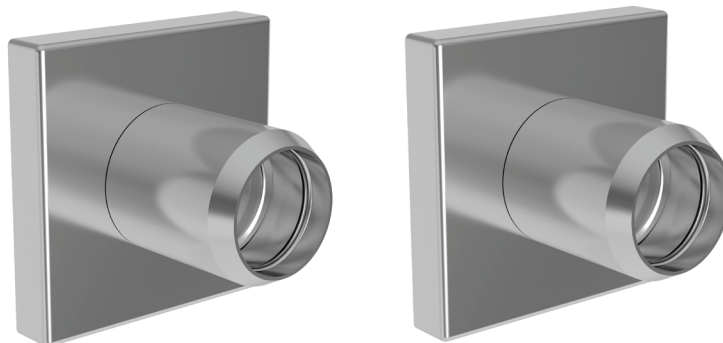
Meets or exceeds the following at date of manufacture:

- All applicable US Federal and State material regulations

## Colors / Finishes

- PC: Polished Chrome
- PN: Polished Nickel
- SN: Satin Nickel


## Shower Rod Bracket Set, Pair 5239B




## Specified Model

Model	Description	Colors / Finishes
5239B	Shower Rob Bracket Set, Pair	<input type="checkbox"/> PC <input type="checkbox"/> PN <input type="checkbox"/> SN

## Required Accessory

<b>Model</b>	<input type="checkbox"/> 1139R-6
<b>Finish</b>	<input type="checkbox"/> PC <input type="checkbox"/> PN <input type="checkbox"/> SN
<b>Image</b>	

## Optional Accessory

<b>Model</b>	<input type="checkbox"/> 1139SR
<b>Finish</b>	<input type="checkbox"/> PC <input type="checkbox"/> PN <input type="checkbox"/> SN
<b>Image</b>	

## Product Specification:

Add "Color / Finish" Suffix to Model Number Below

The Shower Rod Set shall incorporate solid metal construction including a stainless steel rod and concealed mounting brackets. Mounting brackets shall incorporate o-ring stabilizers at the mounting bracket/rod interfaces. Shower Rod Set shall complement Lineal product series. Shower Rod Set shall consist of be Ginger Shower Rod Brackets (Pair) Model 5239B/\_\_\_\_ and Ginger 6' Shower Curtain Rod Model 1139R-6/\_\_\_\_. [Shower Curtain Rings, Set of 12, shall be Ginger Model 1139SR/\_\_\_\_.]

# 5239B

**Product Dimensions** *(units are in inches)*

