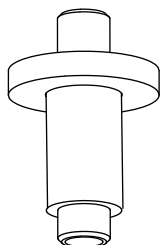


100.2CSA | Ceiling Mount Shower Arm - 2"



SPECIFICATIONS:

- Solid Brass Construction
- With Flange
- Also available in 6" (100.6CSA), 8" (100.8CSA) and 12" Versions (100.12CSA)

FINISHES :

- Chrome - 100.2CSACP / Brushed Nickel - 100.2CSABN

Legislation Compliance



ZeroDrip Technology



Technical Diagram

