

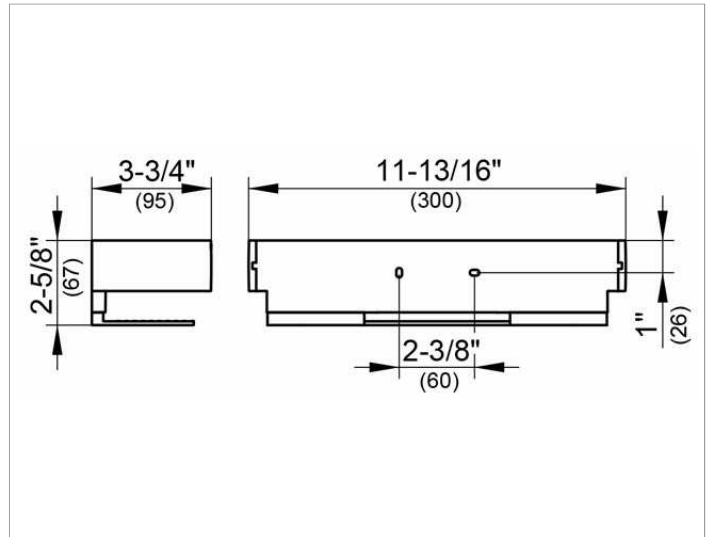
Edition 11

11158010000 Shower basket

PRODUCT



DRAWING



SURFACE

aluminium silver anodized (E6 EV1)/chrome-plated

SPECIFICATIONS

KEUCO EDITION 11 sponge basket for wall mounting 11158010000 Shower basket with aluminum Silver anodized aluminum/high-gloss chromed in a clear-cut design and geometric shape, easy to clean, Depth 95 mm, width 300, height 67 mm, hole distance 60 mm Comes with corrosion resistant mounting hardware

Warranty: KEUCO products are covered by a 5-year manufacturer's warranty, in effect from the date of purchase. During this time, proven product defects will be remedied free of charge. Warranty claims must be filed in writing, including a detailed description of the defect immediately after a defect has occurred. For a copy of our detailed product warranty policy, please contact us at office-usa@keuco.com.

Installation: KEUCO products must be installed by a qualified professional in accordance with the respective installation guidelines and any applicable federal / local building codes and regulations.