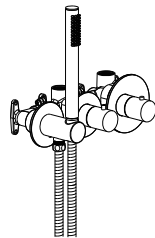
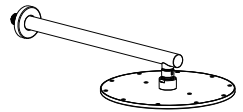




Installation Guide



**Circular
KSF410**

Before Installation



CAUTION

Failure to read these instructions prior to installation may result in personal injury, property damage, or product failure. Manufacturer assumes no responsibility for product failure due to improper installation.



DO NOT RETURN TO STORE

If you have any trouble, contact us before reaching out to the retailer. We'll make it right. Our customer service team will be glad to assist you with any assembly, missing part or questions that you may have about your products.

Contact KIBI 📞 855-883-0888 ✉️ support@kibiusa.com 🌐 www.kibiusa.com

PRIOR TO INSTALLATION

- 1- For best results, we recommend that this unit be installed by a licensed, professional plumber.
- 2- Please read over these instructions thoroughly before beginning installation. Make sure that you have all tools and supplies needed to complete the installation.
- 3- Please flush the water system to ensure that no metal swarf, solder, and other impurities can enter the faucet that might damage the cartridge. (Most of the leakages and water flow issues are from avoiding this very necessary step).
- 4- Turn off the hot and cold water lines at the angle valve and turn on the old faucet to release any built-up pressure.
- 5- Keep this booklet and the receipt (or other proof of date and place of purchase) for this product in a safe place. The receipt is required should it be necessary to request warranty parts.
- 6- Please keep the box and packaging materials until your product is completely installed and functional.

Cleaning and Care

Clean the faucet often with a soft cloth to keep it looking like new. For heavy cleaning you can use mild liquid detergents or non-abrasive liquid polisher. Rinse with water and dry with a soft cloth. Avoid abrasive cleaners, steel wool and harsh chemicals as these will dull the finish and void your warranty.

Tools you may need



Drill



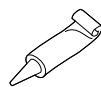
Safety Glasses



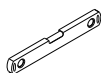
Phillips Screwdriver



Wrench



Silicone sealant



Level



Pencil



Plumbers Tape

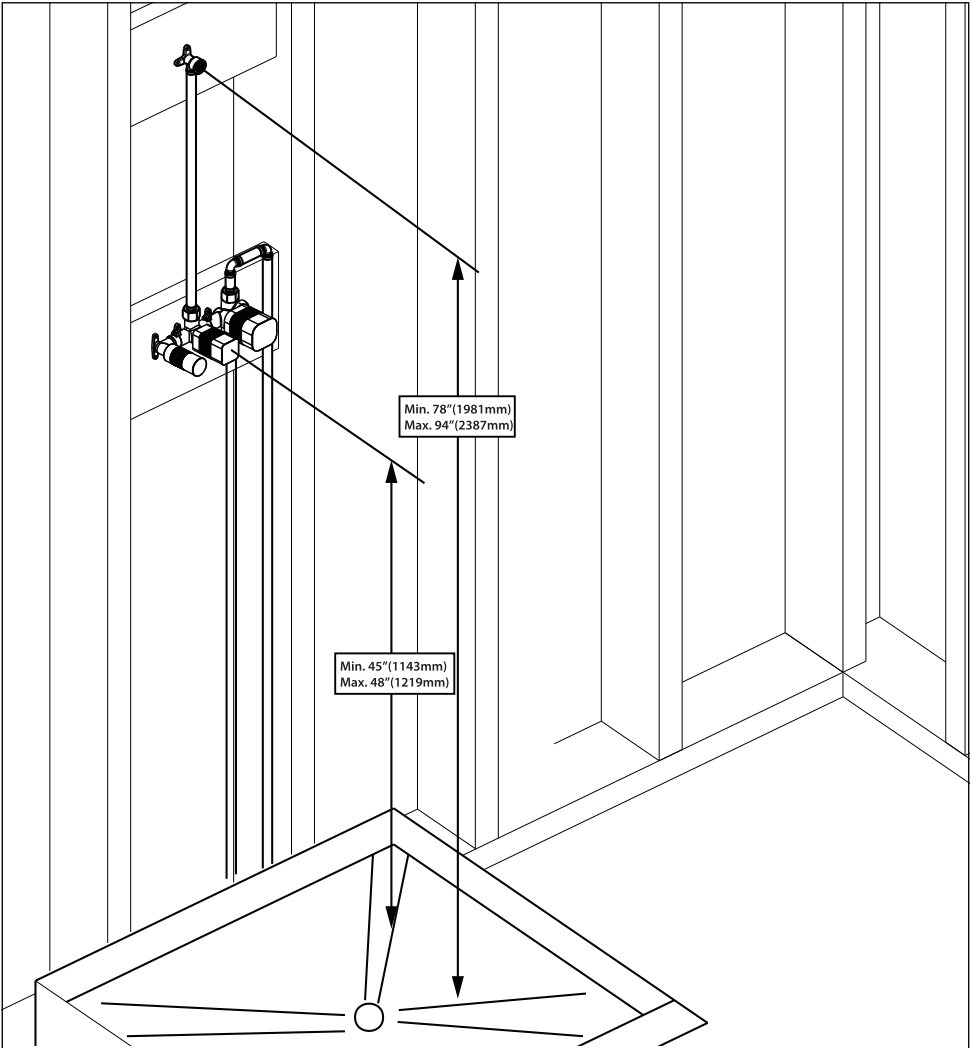


Tape Measure



Angle Grinder

Installation Schematics



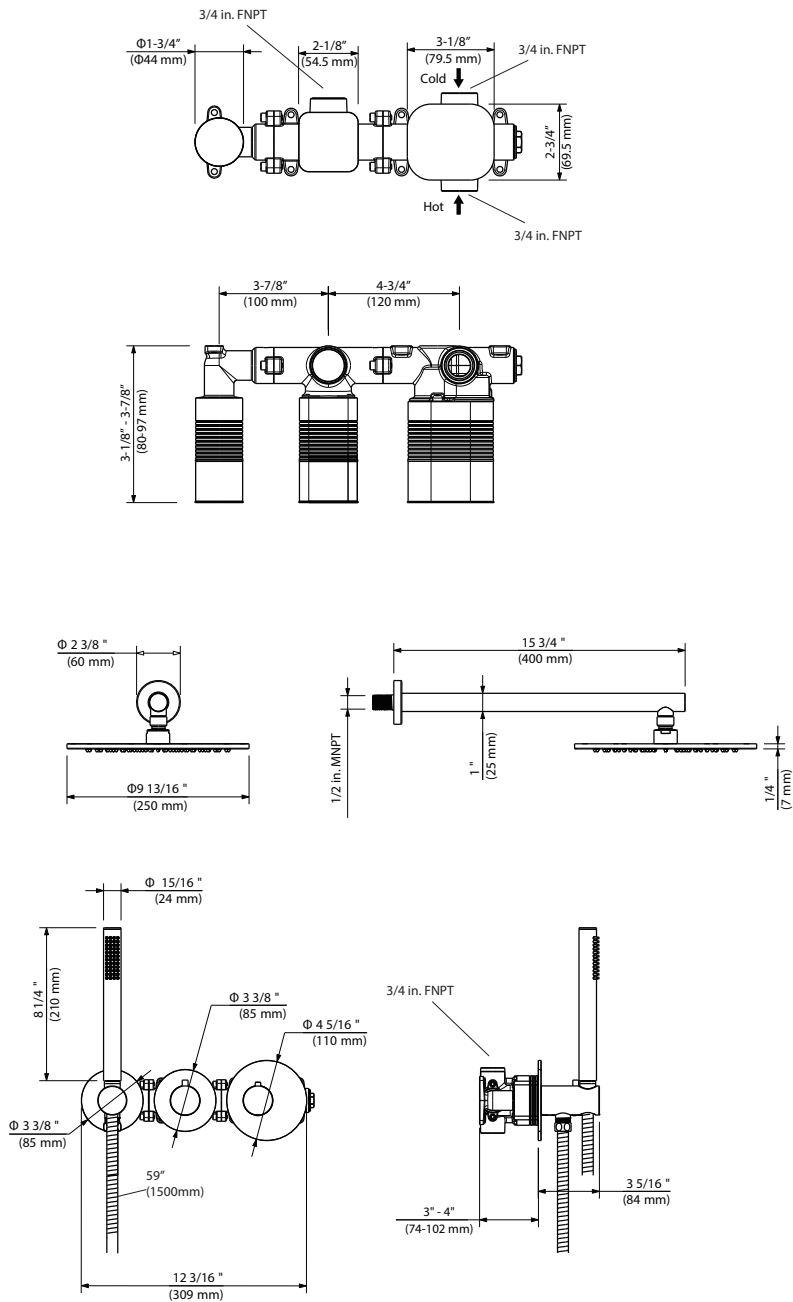
Installation Schematics – Measuring for Ideal Shower Performance.

Position the valve body 45-48 inches from the floor of the tub basin. (Follow valve instruction for proper valve body installation).

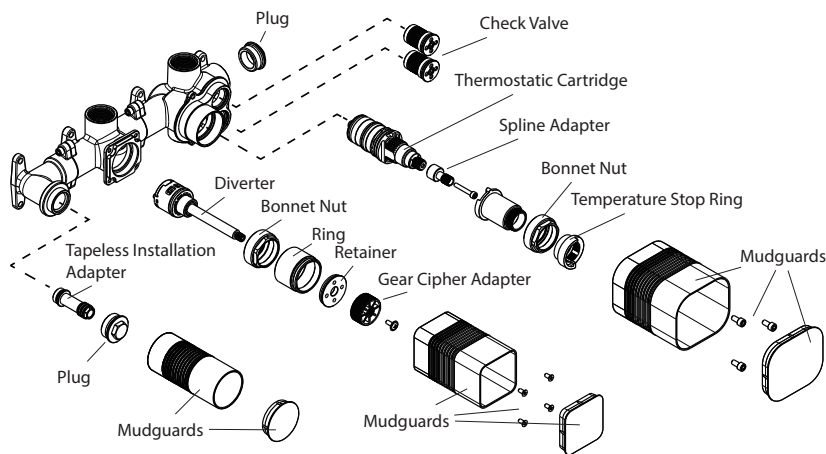
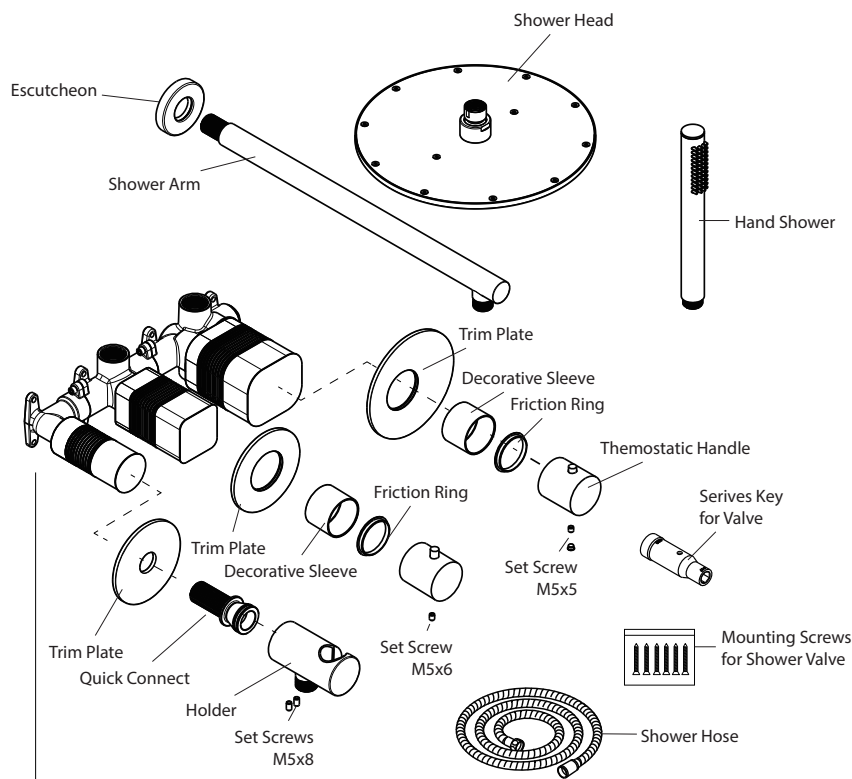
The shower arm should be placed 78-94 inches above the floor of the tub basin. (Follow shower arm instruction for proper threaded adapter installation).

Dimensions

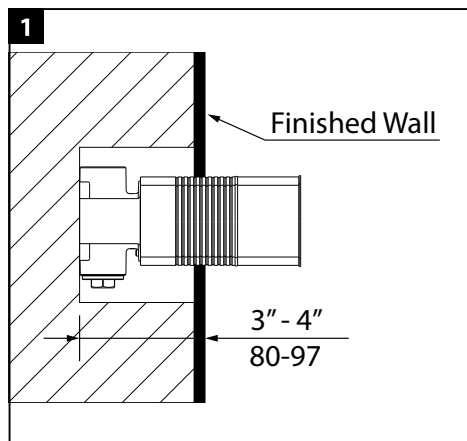
Critical dimensions show in mm



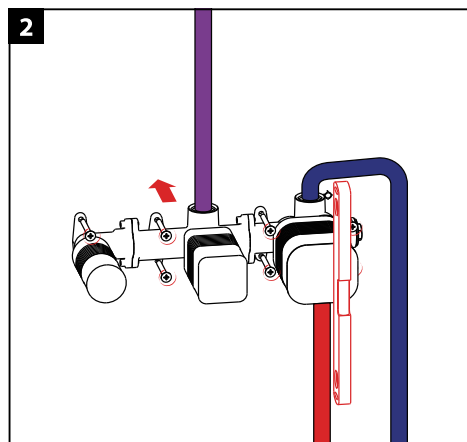
Parts List



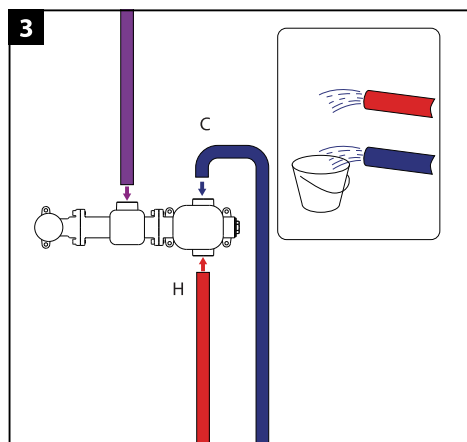
Valve Installation Instructions



SHUT OFF WATER SUPPLIES. This valve is designed to fit into a wall that is 3"-4" (80 - 97mm) from the finished wall to the back of the valve. Turn off the water supplies, install the valve so the finished wall will fit between the MIN and the MAX mark on the mud guard

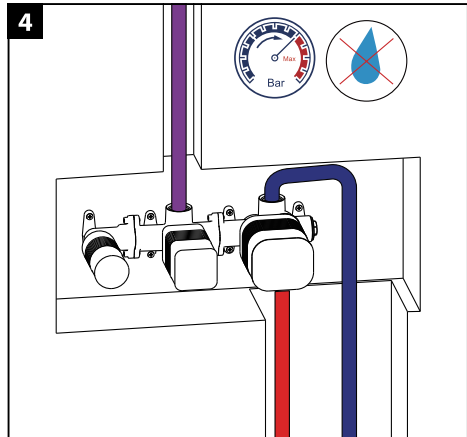


Using the spirit level for leveling reference, Position the valve onto the wall and mark the position for the fixing lugs, drill the holes and fixing the valve to the wall with the supplied screws.

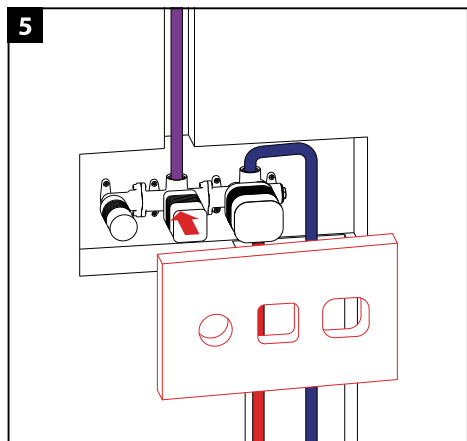


Open the water suppliers, flush the pipes then close the water supplied. Connect the valve body to water supplies using proper fittings, (C) is the cold inlet port and (H) is the hot inlet port, then connect the water outlet accordingly.

Valve Installation Instructions

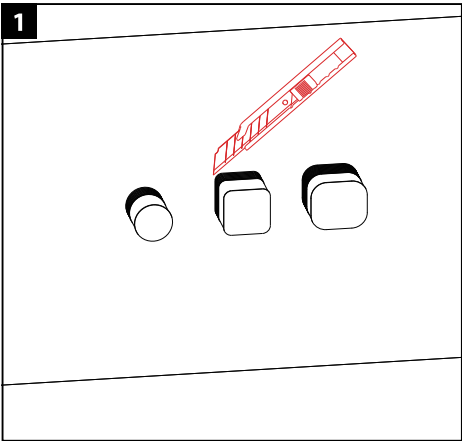


Open the water suppliers and proceed the pressure and leakage tests.

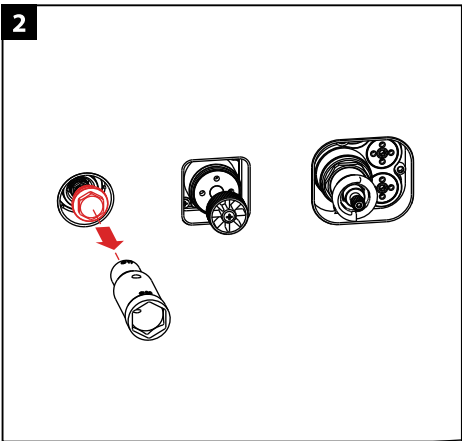


Using the mud guard as template, cut the tile opening, then put on the tiles accordingly. Once the valve has been secured to the wall, the plastic dust cover can be temporarily attached to the valve. This will protect the valve while additional work is completed.

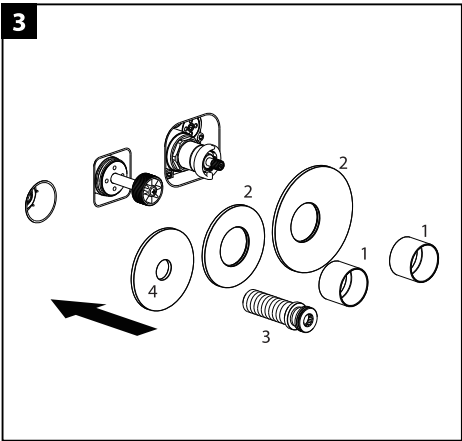
Trim Installation Instructions



Following the cutline on the box, cut the additional box part.



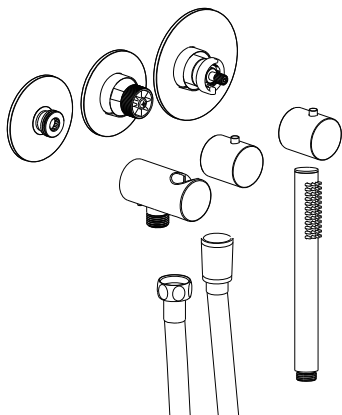
Remove the plug by using the supplied spanner.



Slide large decorative tube(1) onto the valve. Use water to wet the round rubber gaskets on the trim plate(2) and slide trim plate over(2) decorative tube. Gently press trim plate(2) against the finished wall. Thread the quick connector(3) through the trim plate(4) and attach it to the valve body. Please make sure you place in correct orientation if there are etchings on the front of the cover plate.

Trim Installation Instructions

6



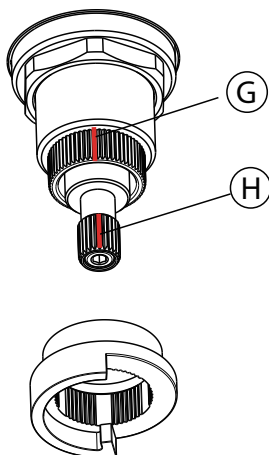
After adjusting water temperature, and ensuring temperature stop ring is in place, install temperature handle onto spindle so that the push button is at the top. Use Allen wrench to secure set screw and push in silicone plug.

Position diverter handle at the desired upward position, loosen screw and rotate spindle adapter and at the same time rotate diverter handle until the desired position is achieved.

Secure the spindle adapter with screw and diverter handle with set screw by using Allen wrench Push in silicon plug.

Install the shower holder onto quick connector, then connect shower hose and hand shower accordingly.

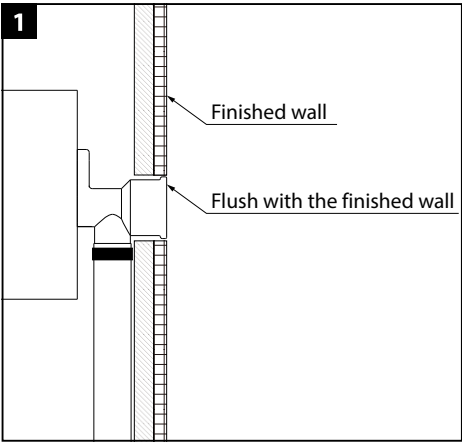
Adjusting Water Temperature



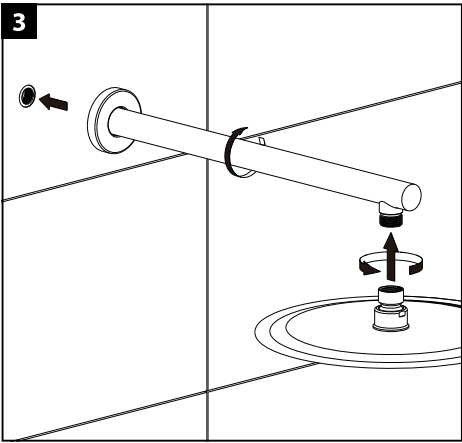
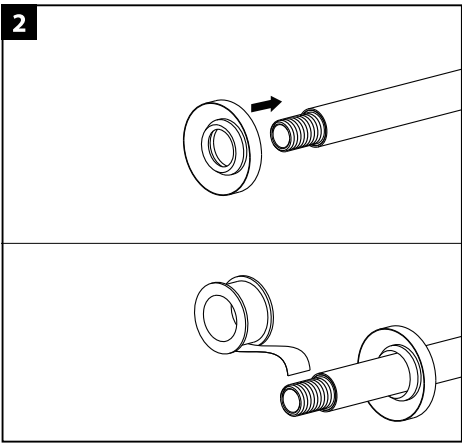
The thermostatic valve is preset at the factory and tested at 100 F (38 C) indicated by the red mark (#H) on the spindle aligning with the straight black line (#G) on the thermostatic cartridge body at the twelve o'clock position. To calibrate temperature according to your own operating conditions, follow the steps below:

1. Turn on the valve and check the temperature of water at any shower element with a thermometer.
2. Turn the spindle clockwise or counter-clockwise until temperature at the shower element reaches 100 F (38 C).
3. Ensure the temperature stop ring is fitted onto the thermostatic cartridge with the open slot pointing upward.
4. Install temperature handle (supplied in the trim package) so that the anti-scalding push button on the thermostatic cartridge is at the top.

Shower Head and Shower Arm Instructions



SHUT OFF WATER SUPPLIES.
Consider the type and the thickness of your finished wall before placing your stringer back plate.
Install the threaded adapter (**Not supplied**) so the surface of the finished wall is flush with the front of the threaded adapter.
Make sure that 1/2" threaded adapter is installed securely inside the wall.



Screw the shower arm into threaded adapter.
Screw the shower head onto the shower arm and tighten with an adjustable wrench.

Limited Lifetime Warranty

Thank you for choosing Kibi USA faucets and accessories. We are dedicated to providing you with exceptional products that are built to last. Kibi USA is proud to offer a comprehensive limited lifetime warranty on our kitchen and bathroom faucets and accessories. Here are the details of our warranty policy:

Kibi USA warrants the structure and finish of the faucets and accessories to be free from defects in material and workmanship under normal usage for as long as the original purchaser resides in the residence in which the product was first installed. Additionally, the following warranty periods apply to specific components:

- **Sprayhead Assembly:** Kibi warrants the sprayhead assembly, including the engine, aerators, structure, restrictors, backflow preventers, sprayer hoses, and braided supply line hoses (nylon, silicon, and stainless steel), to be free from defects in material and workmanship under normal usage for a period of one (1) year from the date of purchase.
- **Cartridge:** Kibi warrants the faucet's cartridge to be free from defects in material and workmanship under normal usage for a period of five (5) years from the date of purchase.