

Tools you may need



Drill



Phillips Screwdriver



Stud Finder



Safety Glasses

PARTS Included In the Package



Magnification Mirror



Mounting Screw x8

Hardware Bag

Before Installation



Failure to read these instructions prior to installation may result in personal injury, property damage, or product failure. Manufacturer assumes no responsibility for product failure due to improper installation.

IMPORTANT SAFETY INSTRUCTIONS

- To ensure correct installation, anchor the Grab Bar over a wall stud.
- For robust support, at least two of the three screws at each end of the Grab Bar should penetrate the wallboard or tile and be firmly fastened into a wall stud. The Grab Bar may be mounted vertically, horizontally, or at any angle, but at least two of the three mounting screws at one end must be securely fixed into a wall stud. Locate the wall studs behind the wall before beginning installation (a stud finder can be purchased at hardware stores).
- When drilling, exercise caution to avoid contact with electrical wiring or plumbing hidden behind the wall, as damaged wiring could lead to electric shock or fire. Be aware of the location of internal wall wiring, especially in older homes that may not meet modern housing codes, to avoid installation interference. If in doubt, consult a qualified professional for installation.
- After any adjustments, repairs, or service, ensure all attaching hardware is securely tightened before use.
- Assist Bars can enhance safety in bath and commode areas when installed correctly. A qualified professional should determine the location, size, and angle of the bars for maximum safety and functionality.
- Use EXTREME caution on wet tub or floor surfaces.
- Individuals with limited physical capabilities should be supervised or assisted in bath and commode areas, even with Assist Bars installed.
- The Assist Bar is designed to provide support and increased stability for individuals up to 300 pounds and is NOT intended to support an individual's full weight. Use the bar for assistance ONLY.

CLEANING AND CARE

To maintain and protect the fine luster of all bath accessories, clean with a soft, damp cloth only. **DO NOT USE** scrub pads, detergents or cleansers as they may harm the protective finish of your bath accessories.

Damage to the product caused by improper care or the use of improper cleaning agents is not covered by the warranty.

NOTE: Periodically inspect the Grab Bar for damage or looseness.



DO NOT RETURN TO STORE

If you have any trouble, contact us before reaching out to the retailer. we'll make it right. Our customer service team will be glad to assist you with any assembly, missing part or questions that you may have about your products.

Contact KIBI 📞 855-883-0888 ✉️ support@kibiusa.com 🌐 www.kibiusa.com

Installation

1

IMPORTANT: To ensure correct installation, anchor the Grab Bar over a wall stud.

2

Slide the cover plate on the safety grab bar to reveal the mounting base.

3

Place the product against the wall in the desired location. If you're installing it horizontally, make sure it's level. Then, use a pencil to mark the wall to show where the mounting should go.

4

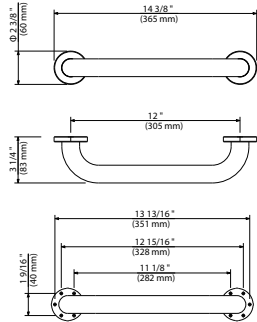
Insert the provided wood screws into one end of the Grab Bar and screw them into the wall and wall stud, ensuring they are hand-tightened only. Note: When installing the Grab Bar over ceramic tiles, use a 1/4-inch carbide tip drill bit to drill through the tile to avoid damaging the tiles. Finally, securely tighten all mounting wood screws using a screwdriver.

5

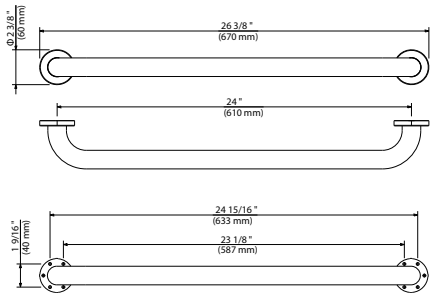
Position the cover plates over the mounting base and press firmly against the wall to secure them in place.

Critical dimensions show in mm

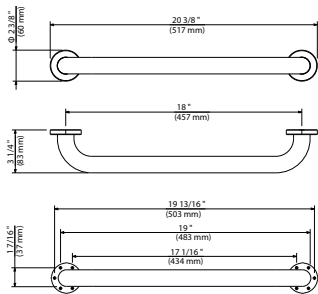
KGB1012



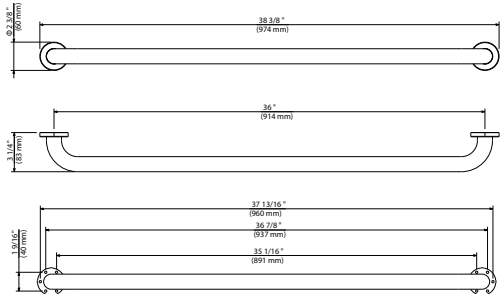
KGB1024



KGB1018



KGB1036



WARRANTY

KIBI warrants to the original purchaser that, it will, at its election repair, replace, or make appropriate adjustment to products made by this company shown to have significant defects in material or workmanship which are reported to KIBI in writing within one (1) year from the date of delivery. KIBI is not responsible for installation costs.

The warranty is void in the event the product is damaged in transit, or if damage or failure is caused by abuse, misuse, abnormal usage, faulty installation, damage in an accident, improper maintenance, or any repairs other than those authorized by KIBI.

At the expiration of the one year warranty period, KIBI shall be under no further obligation under any warranty, expressed or implied, including the implied warranty of merchantability. KIBI shall not be liable for any consequential damages arising out of or in connection with the use or performance of its products. Some states do not allow limitations on how long an implied warranty lasts or do not allow the exclusion or limitation of incidental or consequential damages, so the above limitation or exclusion may not apply to you.

Any liability against KIBI under any implied warranty, including the warranty of merchantability, is expressly limited to the terms of this warranty. Permission to return any merchandise under this warranty must be authorized by KIBI and returned prepaid by the purchaser. Claims under this warranty should be sent directly to your dealer.