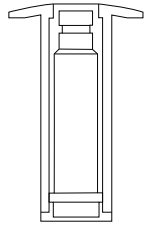




INSTALLATION INSTRUCTIONS

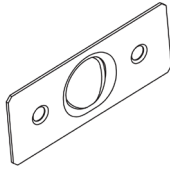
FOR MAGNETIC DOOR STOPPER

PARTS



Floor Insert
With Metal Rod

2x Screws

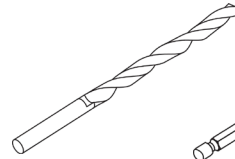


Strike Plate

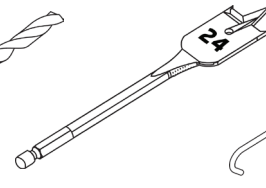


Round Magnet

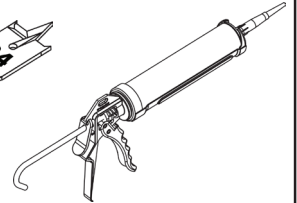
TOOLS NEEDED



14 mm Drill Bit



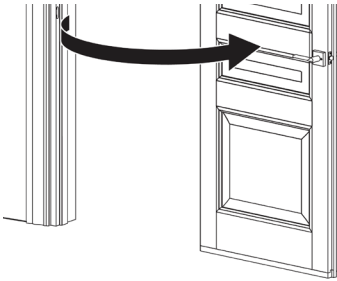
24 mm Spade Bit



Silicone

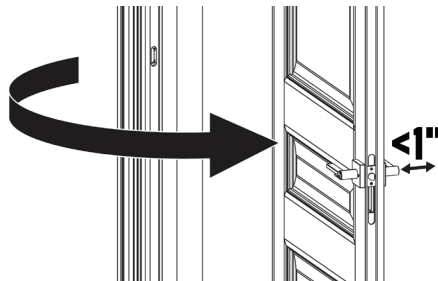
STEP 1

Follow the next three steps to mark your floor.
Swing the door open.



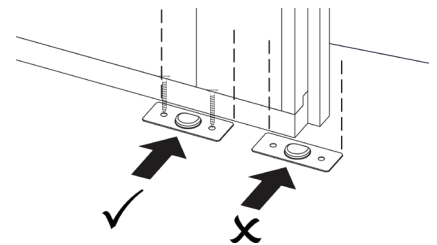
STEP 2

Make sure to leave at least 1" between your
door knob and the wall.



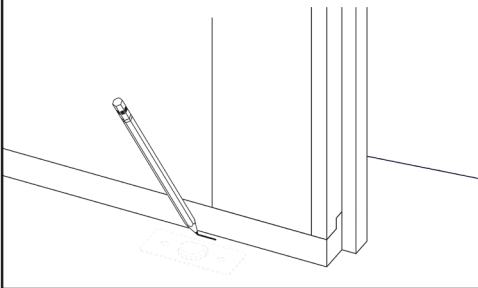
STEP 3

Later, a strike plate will be installed under the door by
two screws. Make sure you leave room from the edge
of the door to where the strike plate will reach.



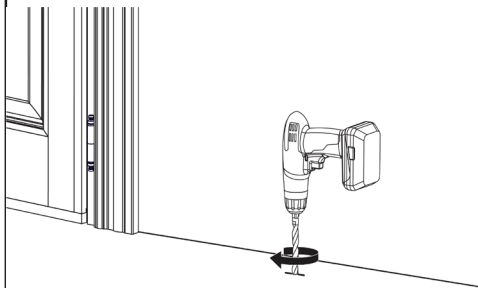
STEP 4

Mark the spot on the ground.



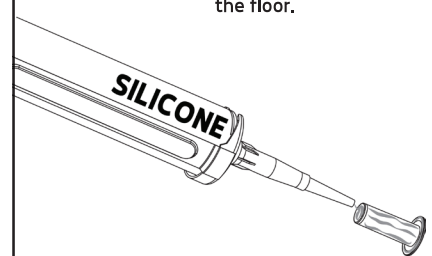
STEP 5

Drill a hole in the ground on your mark, using a
14 mm drill bit.



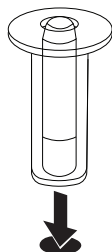
STEP 6

Put silicone around the stem, bottom and
inside of the lip of the insert that will go into
the floor.



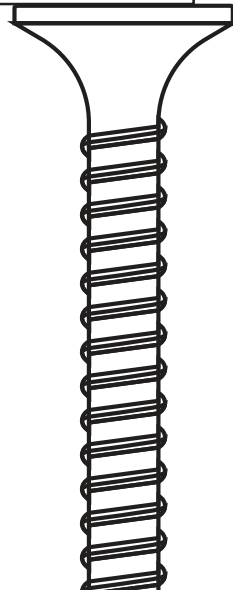
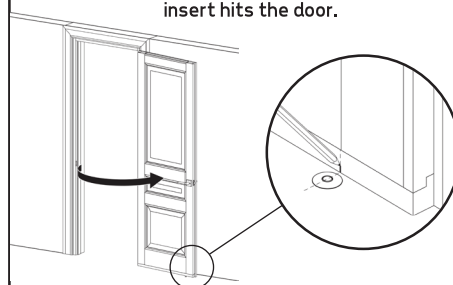
STEP 7

Put the floor insert into the hole in the ground.



STEP 8

Run the door over the floor insert and make a
mark on the outside of the door where the floor
insert hits the door.



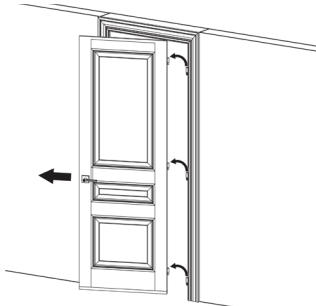


INSTALLATION INSTRUCTIONS

FOR MAGNETIC DOOR STOPPER

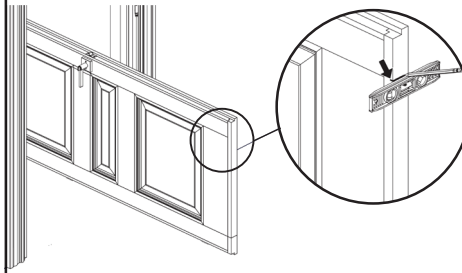
STEP 9

Take the door off the hinges.



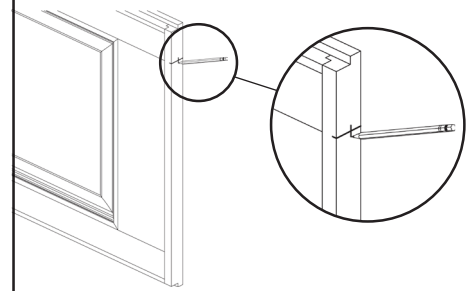
STEP 10

Find the mark you drew on the outside of the door and mark a line on that spot, on the bottom of the door.



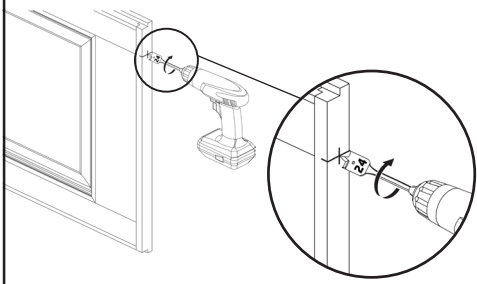
STEP 11

Draw a mark on the center of the line you drew in the previous step.



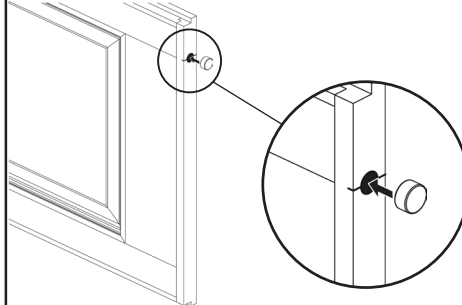
STEP 12

Using a 24mm spade bit, drill a hole on the mark in the door.



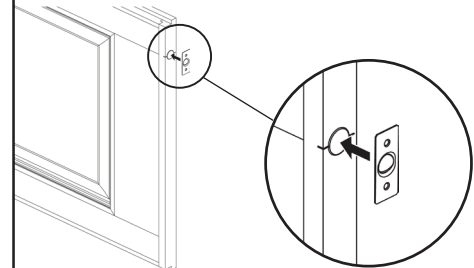
STEP 13

Place the round magnet into the hole in the door.



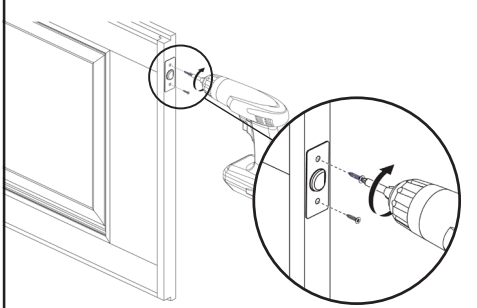
STEP 14

Place the strike over the round magnet, making sure that the shallow end of the strike is on the side of the door that will be towards the wall.



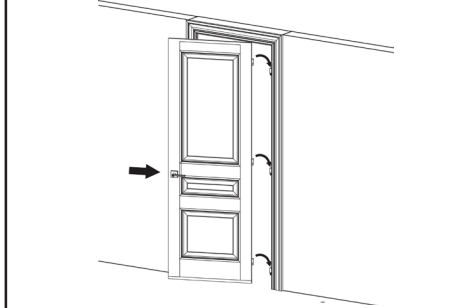
STEP 15

Install the strike over the magnet.



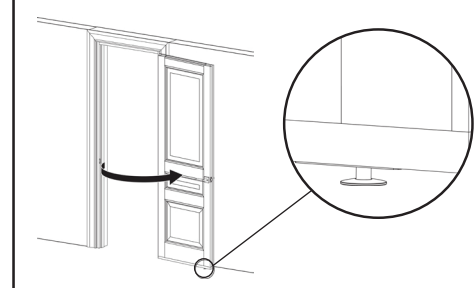
STEP 16

Put the door back on the hinges.



STEP 17

Test the door to ensure it stops when it hits the magnet on the floor.



MEGA HANDLES

Questions? We are here to help!
Please email support@megahandles.com