

Buena Entry Spec Sheet

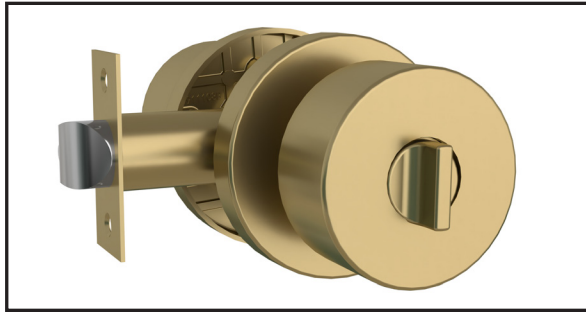
Description: Knob Handle, Round Rosette, Lock on Knob



MEGA HANDLES

www.megahandles.com
sales@megahandles.com

Series #KH600



ENTRANCE
GATE & BED



FUNCTIONS

FUNCTION SHOWN Entrance (N)

Rekey
 Key-alike
 Master Key

FINISH

FINISH SHOWN Satin Brass (SB)

ALSO AVAILABLE Satin Nickel (SN), Matte Black (MB)

SPECIFICATIONS

Door Prep	Cross Bore: 2-1/8" / Edge Bore: 1"
Backset	Fits 2-3/8" & 2-3/4"
Latch	Entry: 2-3/8" & 2-3/4"
Faceplate	1" X 2-1/4" Radius
Screws	304 Stainless Steel, Stronger Material
Door Thickness	1-3/8" - 1-3/4" Standard Doors
Handing	Non Handed
Ansi/Bhma	Exceeds ANSI/BHMA Grade 3 Requirements
Cylinder	Solid Brass/5 Pin/Re-key Function
Knob	Zinc Alloy Round Shape Diameter 2.2"
Reversible	Fits Right and Left Doors
Rosette	Round Shape 65*65mm

How to calculate the product Model #:

Series: KH
 Rosette: Round (D), Square (E), Rectangle (G)
 Series #: 600
 Function: Entrance (N)
 Finish: Satin Brass (SB), Satin Nickel (SN),
 Matte Black (MB)

Example for the image shown:

Series: KH
 Rosette: D
 Series #: 6
 Function: N
 Finish: SB
 Model #: KHD6NSB

SPECIFICATION DRAWING

