

Suana Entry Spec Sheet

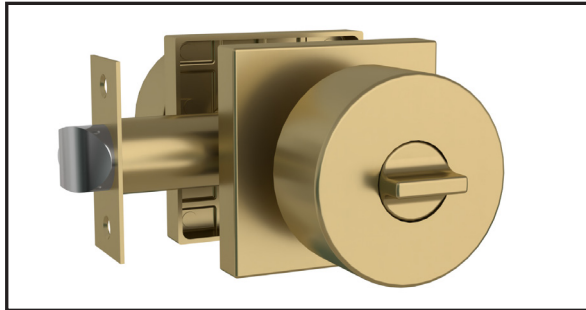
Description: Knob Handle, Square Rosette, Lock on Knob



MEGA HANDLES

www.megahandles.com
sales@megahandles.com

Series #KH600



ENTRANCE
GATE & BED

FUNCTIONS

FUNCTION SHOWN Entrance (N)



🔑 Rekey 🔑 Key-alike 🔑 Master Key

FINISH

FINISH SHOWN Satin Brass (SB)

ALSO AVAILABLE Satin Nickel (SN), Matte Black (MB)

SPECIFICATIONS

Door Prep	Cross Bore: 2-1/8" / Edge Bore: 1"
Backset	Fits 2-3/8" & 2-3/4"
Latch	Entry: 2-3/8" & 2-3/4"
Faceplate	1" X 2-1/4" Radius
Screws	304 Stainless Steel, Stronger Material
Door Thickness	1-3/8" - 1-3/4" Standard Doors
Handing	Non Handed
Ansi/Bhma	Exceeds ANSI/BHMA Grade 3 Requirements
Cylinder	Solid Brass/5 Pin/Re-key Function
Knob	Zinc Alloy Round Shape Diameter 2.2"
Reversible	Fits Right and Left Doors
Rosette	Square Shape 65*65mm

How to calculate the product Model #:

Series: KH
Rosette: Round (D), Square (E), Rectangle (G)
Series #: 600
Function: Entrance (N)
Finish: Satin Brass (SB), Satin Nickel (SN),
Matte Black (MB)

Example for the image shown:

Series: KH
Rosette: E
Series #: 6
Function: N
Finish: SB
Model #: KHE6NSB

SPECIFICATION DRAWING

