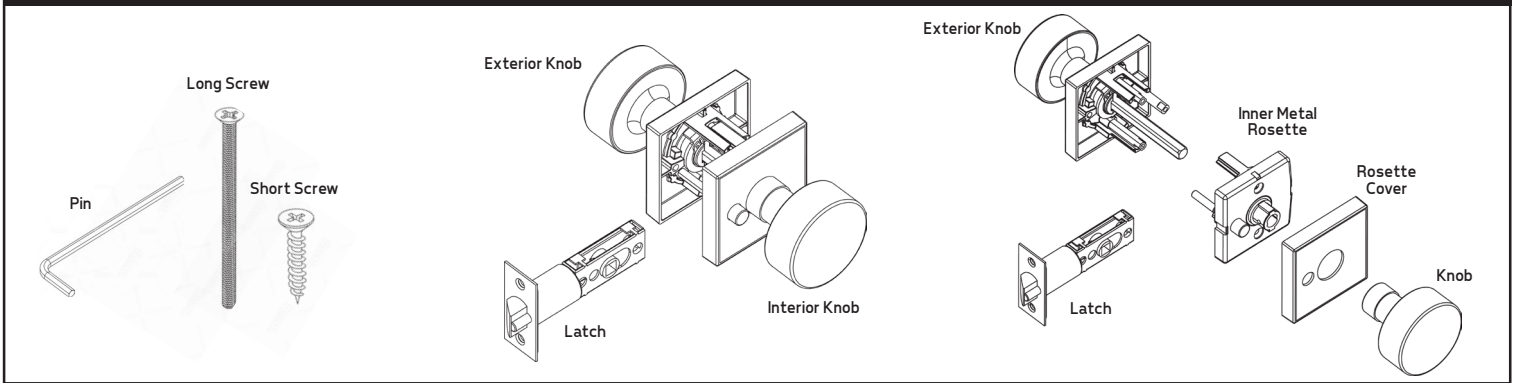




# INSTALLATION INSTRUCTIONS

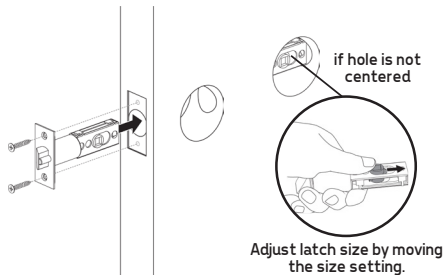
## FOR ENTRY KNOBS

### PARTS



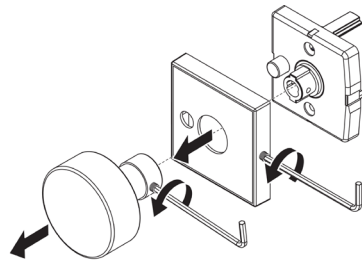
### STEP 1

Install the latch onto the door and ensure that the hole is centered. Use the shorter screws.



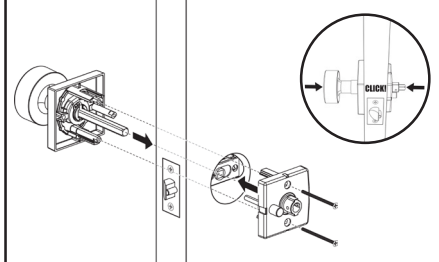
### STEP 2

Unscrew the knob and the rosette cover from the core (interior knob) using the pin included.



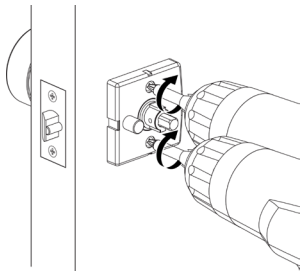
### STEP 3

Connect the exterior knob with the inner metal rosette through the latch.



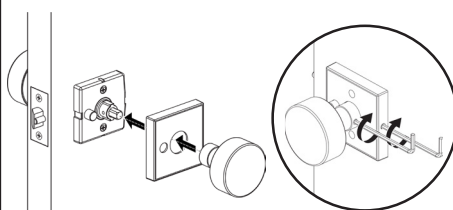
### STEP 4

Secure it with the long screws using a screwdriver.



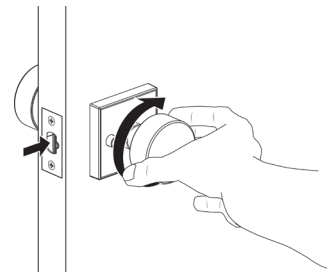
### STEP 5

Reconnect the rosette cover and knob using the pin included.



### STEP 6

Test the knob to ensure that all parts work together correctly.



### HANDLE LOCK INSTALLATION TEMPLATE

