

SIMPLE INSTALLATION

WARM HOUSES

BEAUTIFUL FACADES

REDUCED COSTS FOR HEATING & COOLING

OLANS

Insulated Brick Façade Panels



MODERN INSULATION SYSTEM

www.olans.us

781-856-3986

617-893-3414

office@olans.us

Application Features and Installation Details

As far as you know, the façade serves both a protective and decorative function.

The process of insulating and mounting exterior walls with a finished façade can be time-consuming and expensive. It requires the use of materials such as insulation, facing panels, siding, and bricks, as well as vapor and water barrier wraps.

However, there is now a material available that combines the best properties of clinker and polyurethane or styrofoam insulation. This material is called - **Insulated Brick Façade Panels**.

Using this energy-saving system can help meet the latest energy conservation regulations and result in up to 30% heating cost savings for a detached house. The **Insulated Brick Façade Panels** system can also be used to cleanly, easily, and economically face the walls of old, prefabricated, and new buildings with the added benefit of thermal insulation.

The water absorption of clinker tiles is in the range of 3% to 5% of the volume weight. While ceramic tiles have this figure up to 15%.

Clinker has a high level of frost resistance - this is the number of freeze-thaw cycles in a saturated state, which the tile withstands before it begins to break.



2. Insulation: Extruded Polystyrene (XPS) - often called Styrofoam, Expanded Polystyrene (EPS), or polyurethane (PUR)

All of these materials provide excellent compressive strength, moisture resistance, and thermal protection.

Ideally suited for residential applications. These types of insulation are a cost-effective, easy-to-install solution that achieves R-values above building regulations. The thickness of the thermal insulation layer is from 1 ½ in to 6 in. Depending on the panel thickness, the R-value is up to 23.



Insulated Brick Façade Panels composition.

1. Clinker tiles

Clinker tiles are manufactured of a special kind of clay. During the manufacturing process, the tiles are heated to about 2000°F until fully formed. Unlike ceramic tiles and facade clinker tiles have the multiple advantages of durability and reliability.



Special features

It is an ideal 2-layer material for finishing facades, which may help to reduce of heat loss by 30-40%. Buildings with **Insulated Brick Façade Panels** are warm and comfortable even in the harshest winters and cool in hot summers. Our product costs less than wood, doesn't attract pests, is water-proof, resist damage from mold, swelling, and cracking. Made from eco-friendly materials, **Insulated Brick Façade Panels** protect your building from heat loss.

The production of Insulated Panels based on polystyrene and polyurethane foam, which are currently one of the most reliable sound and heat insulating materials. Thanks to the use of clinker tiles, panels have very high strength, as well as a noble appearance that imitates perfect brickwork, which is associated with the classic mansions of North America. While maintaining its original appearance and not requiring additional maintenance for many years.

OLANS Insulated Brick Façade Panels open unlimited possibilities for anyone who wants to create a unique but upmarket look. We provide you with an immense catalog that will help you choose clinker insulated panels with many options of colors and styles

Insulated Brick Façade Panels are designed to improve the sound and heat insulation properties of the facades. Structures made of concrete, stone, brick or wood, as well as to give the facades a unique appearance of ideal look.



The gaps between the clinker tiles are grouted, allowing you to give the surface the appearance of perfect brickwork, as well as keep the heat inside the house. **Insulated Brick Façade Panels** suggest the possibility of mounting on various surfaces and all types of walls, regardless of the season.

Advantages of the Insulated Brick Façade Panels.

- **Insulate any walls.** One panel weighs not more than 20 pounds, due to which there is no heavy load on the walls and foundation. The material can insulate any facade (concrete, plywood, etc.)

- **Prevention of defects of a facade.** The materials are not subject to destruction due to the external environment, corrosion, and degradation, exposure to mold and mildew.

- **All-year-round installation.** It is possible to install the Insulated Brick Façade Panels at any time of the year. The big difference in temperatures at the moment of installation works. The installation of the panels can be carried out in any season of the year, at any time convenient for masters and customers. It concerns the dry installation, without glue. If the technology requires the use of an adhesive base, you need to follow the rules of application of the selected adhesive.



- **Noise Insulation.** Insulated Brick Façade Panels not only could protect the house from heat loss but also reduce the sound transmission of the walls.

- **Stylish facade and attractive appearance.** Most Insulated Brick Façade Panels are beautiful, and even original. Imitation brick, stone, and other materials, plus a huge palette of colors and shades of different depths.

- **Long service life.** With proper installation work can last up to 50 years. Install Insulated Brick Façade Panels now and forget about repair for many years. This is a reliable and durable way to insulate, and decorate the façade.

Insulated Brick Façade Panels Installation

Insulated Brick Façade Panels are clearly shaped and fold like a puzzle, and are also sold with integrated insulation anchor, which simplifies the installation process. The clinker tiles have already been installed to the panel. Only joints need to be grouted. For fixing the panels on the facade, you don't need special skills and professional tools. The required set is limited to the saw (circular or table), drill or impact driver, mortar grout gun, level, as well as a trowel for grouting. From materials, pre-purchase mounting polyurethane foam, screws and frost-water-resistant outside grout. On this, the preparation is over – you can proceed with the installation of thermal panels.

Stage # 1: Markup

Using the level need to mark the horizon line around the perimeter of the building.



If the wall is not level need to use furring strips or slats for leveling.

Stage # 2: Starter Base and panels installation

Along the entire perimeter of the foundation, at the required height from the ground, the starting base must be mounted.



Installation begins from the corners of the building. Then the wall panels.



All joints between the panels are recommended to be fixed with polyurethane foam. After completing the installation of the first row, proceed to the mounting of the second row, also starting from the corner of the building. The joint between the panels of the first and second row must be sealed with the PU foam as well.



The Panels are fixed with screws in the manufacture installed pins.



After completing the installation of the first row, proceed to the mounting of the second row, also starting from the corner of the building. The joint between the panels of the first and second row must be sealed with the PU foam as well.



Stage #3: Window and door corners.

Several options are used: the first - the installation of Insulated Brick corners, the second - using the metal or plastic lining.



Stage # 4: Grouting

After the installation of Insulated Brick Façade Panels is completed, you can proceed to the final finishing - grouting of seams with a frost-resistant epoxy compound.



This step is recommended at temperatures above 32F.



Beautiful view and money saving

Builders and homeowners choose Insulated Brick Façade Panels because it combines a layer of insulation with clinker tiles. Developers often have the question of how to increase the energy efficiency of the house and reduce heating cost. In such situations, it is best to use our innovative and versatile facade material – **Insulated Brick Façade Panels**.

You can perfectly clad your house with this innovative product, and make it warm and comfortable. And the main thing, it could help reduce energy costs!

A brick facade made with insulation panels has a unique appearance, and offers lasting protection and safety.



A brick facade made with insulation panels has a unique appearance, and offers lasting protection and safety.

It's a modern material for your existing house or new construction. We want to ensure you're buying the best possible product when you choose your exterior finishing material. Insulated Brick Façade Panels are the leaders in energy efficiency and environmental design.

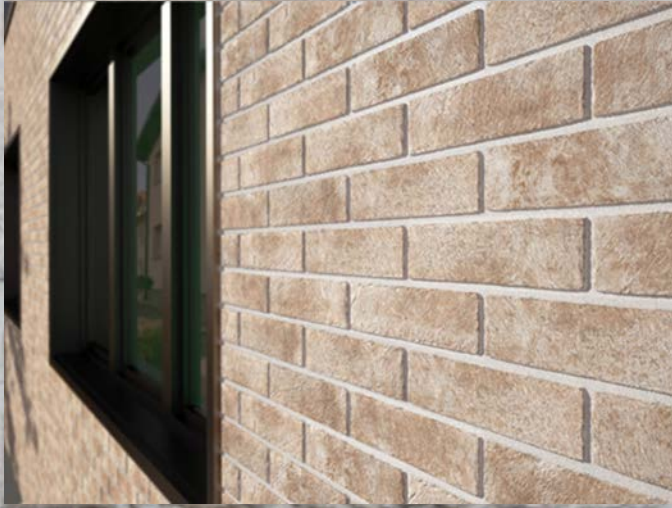
Installation of such cladding can be a DIY project. It does not require specific skills, knowledge and equipment and takes short time.

Rising prices for heating and cooling forced owners to insulate their homes, but the existing technology allows only for a complex multi-step and expensive process.

This product obvious place to look for energy efficiency updates. After all, cladding stands as your first defense against harsh winds, heat, and other weather conditions that affect your house's overall energy performance.

Conclusion

Do you know that up to 35% of a building's internal heat escapes into the atmosphere through its walls?



If you wish to insulate the facade but are unsure how to navigate huge variety of materials and methods?

Call us and we will tell you in detail why **OLANS Insulated Brick Façade Panels** will be an excellent choice for every house!

The Insulated Brick Façade Panels are an ideal option for those who want to reduce the cost of heating in the winter season and cooling the house in the summer. With this material, you can improve the energy-saving properties of the family house or apartment building.

Insulated Brick Façade Panels System - the best solution for your house!

You will have the best façade!

SIMPLE INSTALLATION

WARM HOUSES

BEAUTIFUL FACADES

OLANS LLC

www.olans.us

office@olans.us

phone: 781-856-3986

617-893-3414

