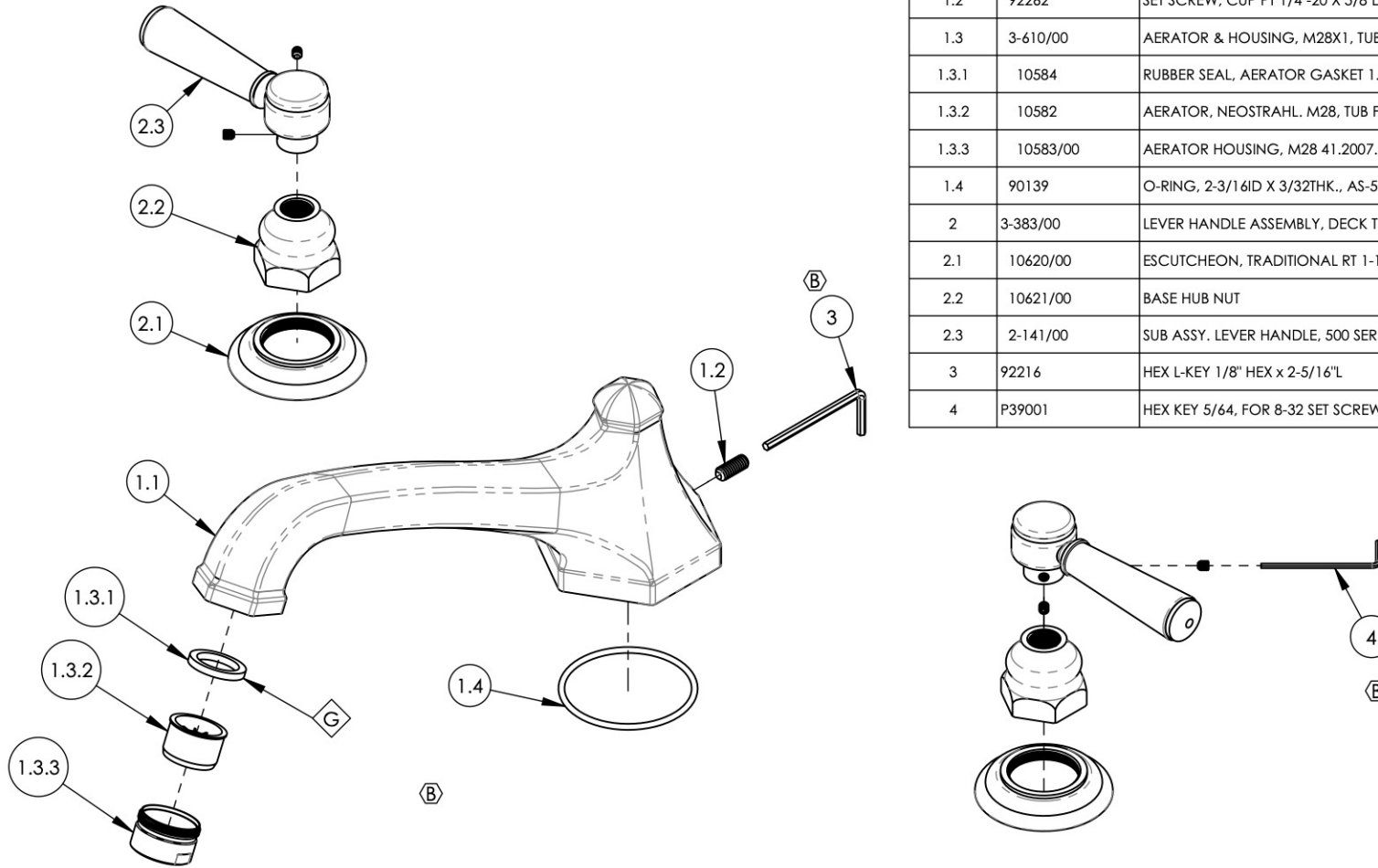


NOTE(S):
 1. PART NUMBER, "/00" DENOTES PART SHALL HAVE FINISH.
 2. APPLY NSF COMPLIANT GREASE TO ANY O-RING, SEALING JOINTS, AND/OR PIVOTAL POINTS.



ITEM NO.	PART NUMBER	DESCRIPTION	QTY.
1	3-144/00	SPOUT, DECK TUB, 500/501 SERIES	1
1.1	P27015	SPOUT, DECK TUB, LE VERRE LA CROSSE	1
1.2	92262	SET SCREW, CUP PT 1/4"-20 X 5/8"L	1
1.3	3-610/00	AERATOR & HOUSING, M28X1, TUB FILLER, FULL FLOW	1
1.3.1	10584	RUBBER SEAL, AERATOR GASKET 1.0"OD X .753"ID X .125"THK	1
1.3.2	10582	AERATOR, NEOSTRAHL, M28, TUB FILLER, FULL FLOW	1
1.3.3	10583/00	AERATOR HOUSING, M28 41.2007.000	1
1.4	90139	O-RING, 2-3/16ID X 3/32THK., AS-568-139	1
2	3-383/00	LEVER HANDLE ASSEMBLY, DECK TUB	2
2.1	10620/00	ESCUTCHEON, TRADITIONAL RT 1-1/4"-20	1
2.2	10621/00	BASE HUB NUT	1
2.3	2-141/00	SUB ASSY. LEVER HANDLE, 500 SERIES	1
3	92216	HEX L-KEY 1/8" HEX x 2-5/16"L	1
4	P39001	HEX KEY 5/64, FOR 8-32 SET SCREW	1

ALL	B	UPDATE TEMPLATE, DWG NAME, SPOUT ASSY, ADD HEX KEYS	12/20/2019	AMM
ZONE	REV.	DESCRIPTION	DATE	APPROVED
REVISIONS				

1261 LOGAN AVENUE
 COSTA MESA, CALIFORNIA 92626
 PHONE: 714.361.4800
 FAX: 714.617.3120

PHYLIRICH[®]
 Defining Luxury Since 1959

PROPRIETARY AND CONFIDENTIAL
 THE INFORMATION CONTAINED IN THIS DRAWING IS THE SOLE PROPERTY OF PHYLIRICH. ANY REPRODUCTION IN PART OR AS A WHOLE WITHOUT THE WRITTEN PERMISSION OF PHYLIRICH IS PROHIBITED.

NEXT ASSY		USED ON		FRACTIONS $\pm 1/16"$ DECIMALS X.X: $\pm .1$ X.XX: $\pm .01$ X.XXX: $\pm .005$ ANGULAR $\pm 2^\circ$
APPLICATION				
MATERIAL	NAME	DATE		
FINISH	DRAWN	LLO	9/4/2015	
DO NOT SCALE DRAWING		CHECKED	GRE	

DECK TUB SET, LEVER, HEX TRADITIONAL			
SIZE	ASM/PRT NO.	REV	
A	500-41/00	B	
SCALE: 1:3	WEIGHT: lbs.	SHEET 1 OF 2	

5

4

3

2

1

E

E

D

D

C

C

B

B

A

A

5

4

3

2

1