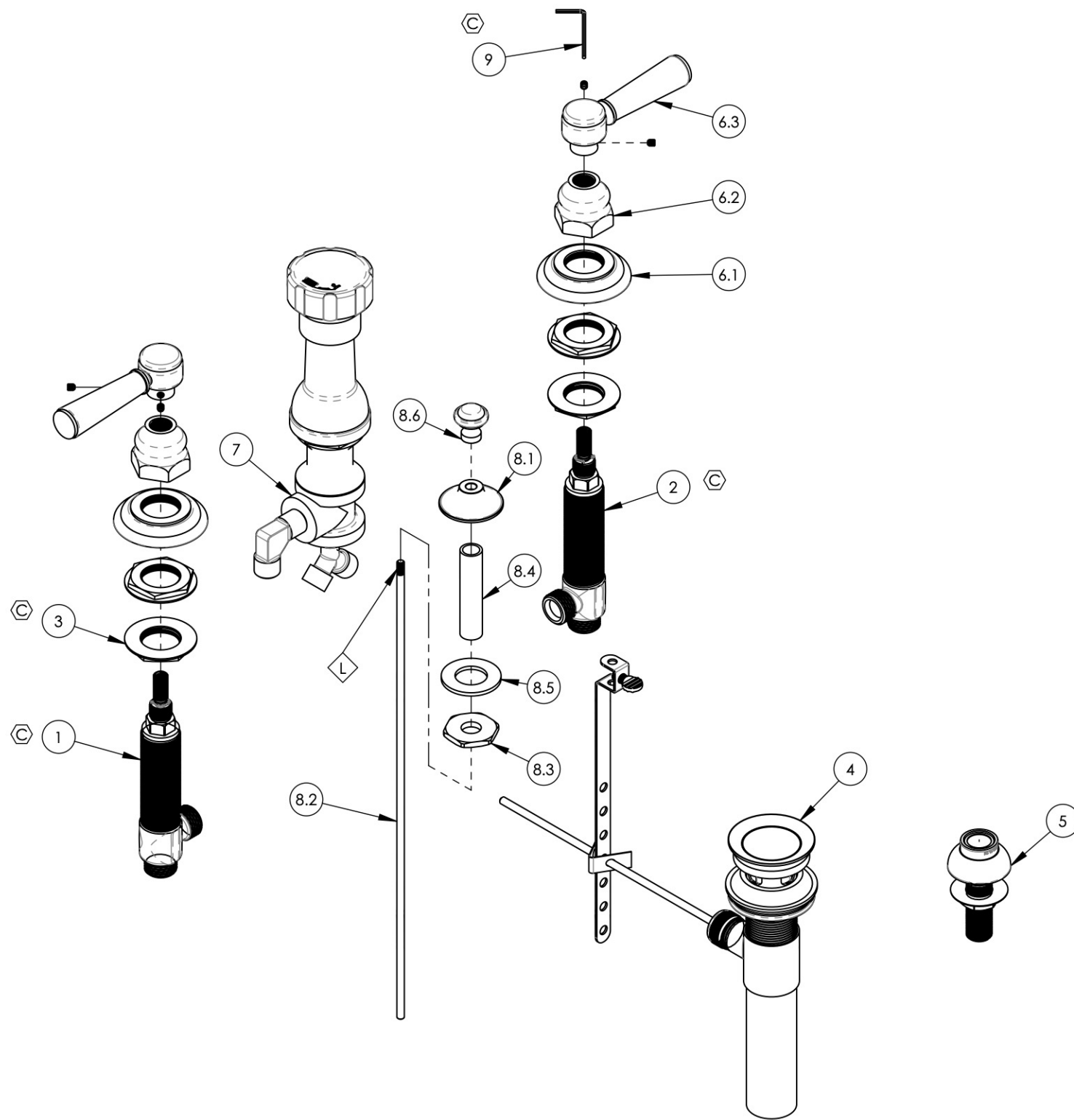


NOTE(S):
 1. APPLY NSF COMPLIANT LOCTITE TO THREADED AREA.



ITEM NO.	PART NUMBER	DESCRIPTION	QTY.
1	1-149	WIDESPREAD VALVE LAV 16PT, HOT, ONLY	1
2	1-150	WIDESPREAD VALVE LAV 16PT, COLD, ONLY	1
3	2-203	MOUNTING NUT KIT, WIDESPREAD LAV	4
4	3-046/00	POP-UP DRAIN ASSEMBLY (2-101, 2-102, & 2-246)	1
5	3-085/00	ASSY, BIDET SPRAYER	1
6	3-140/00	LEVER HANDLE, HEX TRADITIONAL 500 SERIES,	2
6.1	10619/00	ESCUTCHEON, TRADITIONAL LAV 1"-20	1
6.2	10621/00	BASE HUB NUT	1
6.3	2-141/00	SUB ASSY. LEVER HANDLE, 500 SERIES	1
7	3-160/00	BIDET DIVERTER, COMPLETE	1
8	3-385/00	ASSY. BIDET POP-UP ROD, HENRI SERIES	1
8.1	P09007/00	K4160 POP UP GUIDE	1
8.2	10719/00	POP-UP ROD, 10-24, 14" LONG	1
8.3	P09006	SPECIAL HEX F/BIDET SPRAYER	1
8.4	P32010	9/16-20 x 56 NIPPLE FOR COMPRESSION STEM	1
8.5	P35026	3/4" SAE FLAT WASHER	1
8.6	11153/00	POP-UP KNOB, TRADITIONAL	1
9	P39001	HEX KEY 5/64, FOR 8-32 SET SCREW	1

ALL	C	UPDATE TEMPLATE/ VALVES, ADD HEX KEY & CALL OUTS	4/24/2020	AMM
ZONE	REV.	DESCRIPTION	DATE	APPROVED
REVISIONS				
1261 LOGAN AVENUE COSTA MESA, CALIFORNIA 92626 PHONE: 714.361.4800 FAX: 714.617.3120		PHYLIRICH Defining Luxury Since 1959		PROPRIETARY AND CONFIDENTIAL THE INFORMATION CONTAINED IN THIS DRAWING IS THE SOLE PROPERTY OF PHYLIRICH. ANY REPRODUCTION IN PART OR AS A WHOLE WITHOUT THE WRITTEN PERMISSION OF PHYLIRICH IS PROHIBITED.

NEXT ASSY	USED ON	FRACTIONS ±1/16"	DECIMALS X.X: ±.1 X.XX: ±.01 X.XXX: ±.005	ANGULAR ±2°
APPLICATION		MATERIAL	NAME	DATE
FINISH		DRAWN	LLO	11/4/2015
DO NOT SCALE DRAWING		CHECKED	GRE	

FOUR HOLE BIDET SET, LEVER HANDLES, HENRI SERIES		
SIZE B	ASM/PRT NO. 161-61/00	REV C
SCALE: 1:3.5	WEIGHT: lbs.	SHEET 1 OF 2