

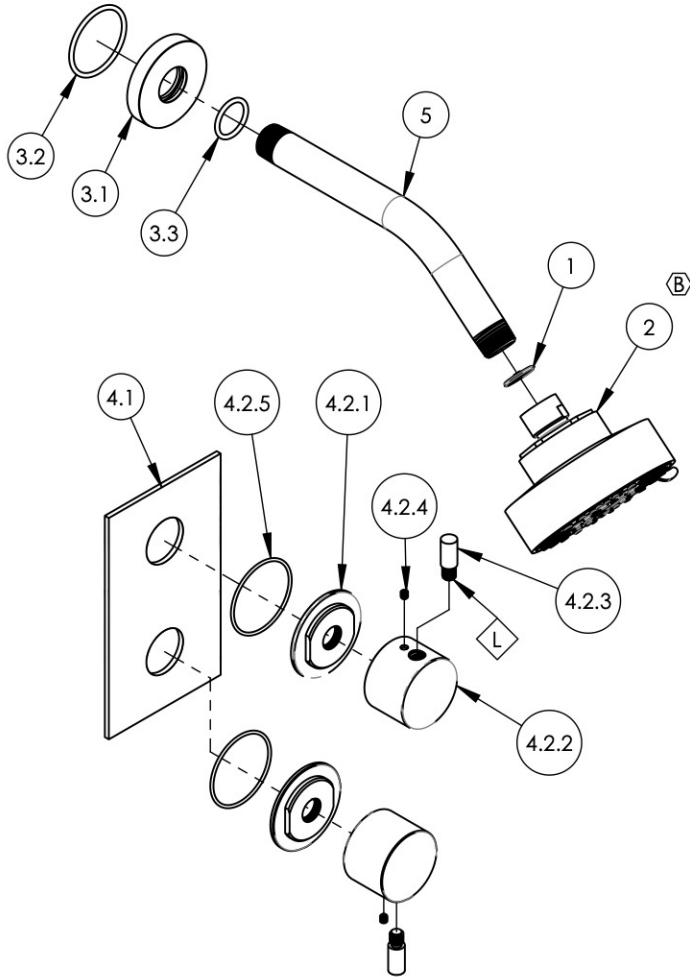
NOTE(S):
 1. PART NUMBER, "/00" DENOTES PART SHALL HAVE FINISH.

2. APPLY NSF COMPLIANT GREASE TO ANY O-RING, SEALING JOINTS, AND/OR PIVOTAL POINTS.

3. APPLY NSF COMPLIANT LOCTITE TO THREADED AREA.

4. APPLY NSF COMPLIANT REMOVABLE (BLUE) LOCTITE TO THREADED AREA.

5. SILVER SOLDER JOINTS SHALL BE FULLY WETTED VIA CAPILLARY ACTION AND COMPLETELY NON-POROUS.



| ITEM NO. | PART NUMBER | DESCRIPTION | QTY. |
|----------|-------------|--|------|
| 1 | 11432 | 1.75 GPM FLOW REGULATOR | 1 |
| 2 | 3-347/00 | SHOWERHEAD, 96MM, FIVE FUNCTION | 1 |
| 3 | 3-700/00 | SHOWER FLANGE, CONTEMPORARY, ROUND | 1 |
| 3.1 | P16019/00 | BASE SHOWER FLANGE, BASIC SERIES | 1 |
| 3.2 | 90129 | O-RING, 1-9/16"ID X 3/32THK, AS-568-129 | 1 |
| 3.3 | 90117 | O-RING, 7/8"ID X 33/32"THK., AS-568-117 | 1 |
| 4 | 4-205/00 | 1/2" MINI THERM, TWO HNDL SHOWER TRIM, (BUILDER LINE) BASIC II | 1 |
| 4.1 | 11212/00 | PLATE, TWO HANDLE, BASIC SERIES | 1 |
| 4.2 | 3-387/00 | SUB ASSY. BASIC II LEVER (SHORT), ECONOMY | 2 |
| 4.2.1 | 11164/00 | ESCUTCHEON BASE, CONTEMP. BASIC II | 1 |
| 4.2.2 | 11167/00 | BASE HANDLE, CONTEMP. BASIC II | 1 |
| 4.2.3 | 11211/00 | HANDLE LEVER SHORT, CONTEMP. BASIC II | 1 |
| 4.2.4 | 92008 | SET SCREW, CUP POINT 8-32, 3/16" L. | 1 |
| 4.2.5 | 90031 | O-RING, 1-3/4"ID X 1/16"THK, AS-568-031 | 1 |
| 5 | P16008/00 | SHOWER ARM (8 INCH) | 1 |

| | | | | |
|-----------|------|---|------------|----------|
| D4 | B | DISSOLVE SHOWER HEAD SUBASSY, REPLACE SHOWER HEAD | 11/22/2021 | AMM |
| ZONE | REV. | DESCRIPTION | DATE | APPROVED |
| REVISIONS | | | | |

1261 LOGAN AVENUE
 COSTA MESA, CALIFORNIA 92626
 PHONE: 714.361.4800
 FAX: 714.617.3120

PHYLIRICH[®]
 Defining Luxury Since 1959

PROPRIETARY AND CONFIDENTIAL
 THE INFORMATION CONTAINED IN THIS DRAWING IS THE SOLE PROPERTY OF PHYLIRICH. ANY REPRODUCTION IN PART OR AS A WHOLE WITHOUT THE WRITTEN PERMISSION OF PHYLIRICH IS PROHIBITED.
DO NOT SCALE DRAWING

PRESSURE BALANCE SHOWER SET, LEVER HANDLE, BASIC II

| | | |
|------------------|--------------------------|--------------|
| SIZE A | ASM/PRT NO. 230-30/00 | REV B |
| SCALE: 1:4.25 | WEIGHT: lbs. | SHEET 1 OF 2 |