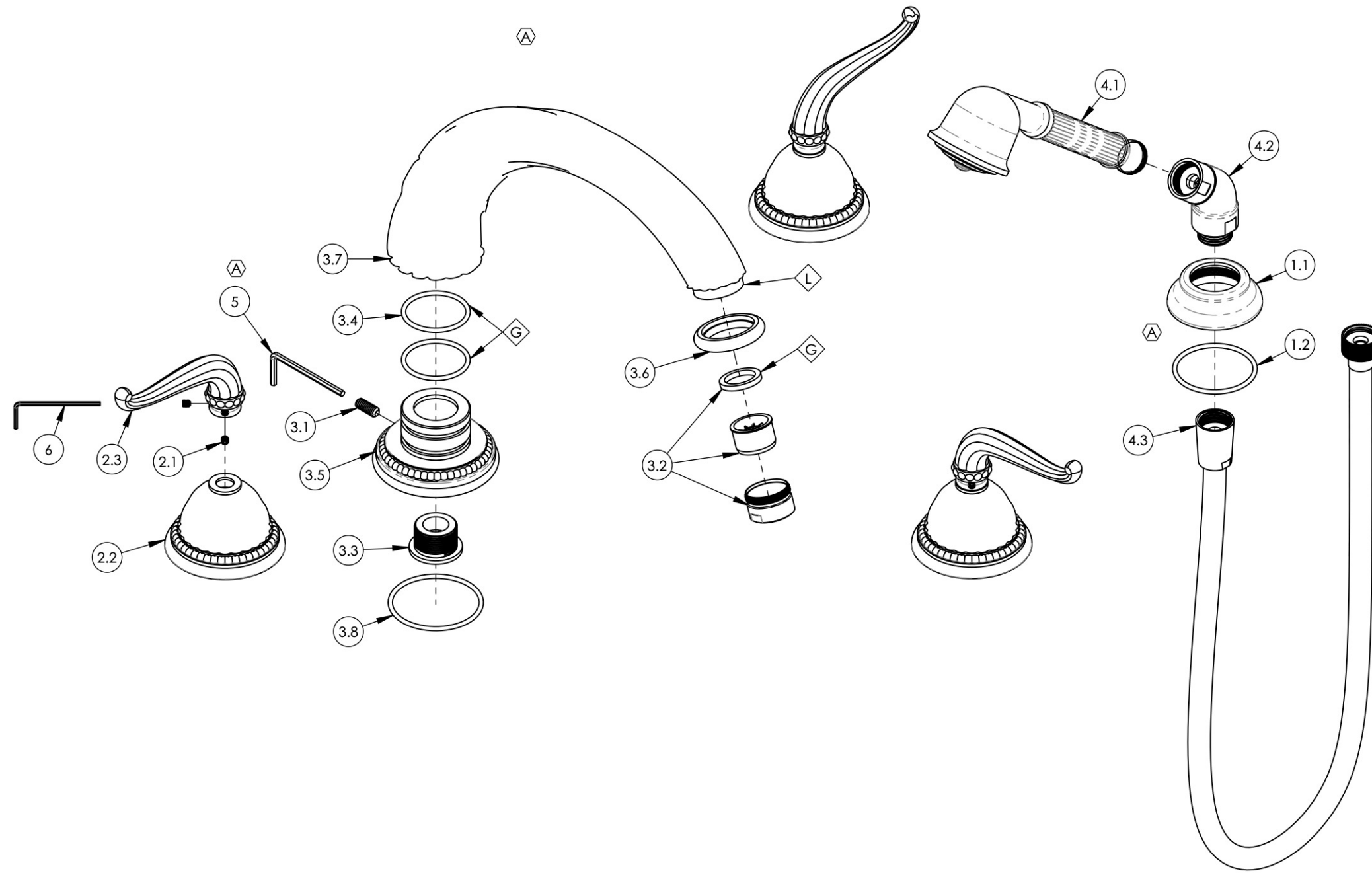


- NOTE(S):
 1. PART NUMBER, "/00" DENOTES PART SHALL HAVE FINISH.
 2. APPLY NSF COMPLIANT GREASE TO ANY O-RING, SEALING JOINTS, AND/OR PIVOTAL POINTS.
 3. APPLY NSF COMPLIANT LOCTITE TO THREADED AREA.



ITEM NO.	PART NUMBER	DESCRIPTION	QTY.
1	3-210/00	ESCUTCHEON BASE, HANDSHOWER, TRADITIONAL	1
1.1	P18001/00	ESCUTCHEON BASE, DECK TUB, HANDSHOWER, TRADITIONAL	1
1.2	90133	1 13/16" O-RING, 1-13/16 ID X 3/32 THK, AS-568-133	1
2	3-225/00	LEVER HANDLE, GEORGIAN & BARCELONA	3
2.1	92008	SET SCREW, CUP POINT 8-32, 3/16" L.	2
2.2	P02013/00	K141 COVER PLATE	1
2.3	2-151/00	SUB ASSY. HANDLE, K141	1
3	3-228/00	DECK TUB SPOUT, P27012 RIBBED, GEORGIAN & BARCELONA SERIES	1
3.1	92262	SET SCREW, CUP PT 1/4"-20 X 5/8" L.	1
3.2	3-610/00	AERATOR & HOUSING, M28X1, TUB FILLER, FULL FLOW	1
3.3	P27012_5	K5141 DECK SPOUT BASE CONNECTOR	1
3.4	90127	O-RING, 1-7/16" ID X 1-5/8" OD X 3/32 THK, AS-568-127	2
3.5	10500/00	K5141 DECK SPOUT BASE	1
3.6	P27014/00	AERATOR RING	1
3.7	P27012_1/00	K5141 DECK SPOUT	1
3.8	90137	O-RING, 2-1/16" ID X 3/32 THK., AS-568-137	1
4	4-017/00	HAND SHOWER HEAD, HOSE, ELBOW, GEORGIAN	1
4.1	3-396/00	HAND SHOWER, HEAD ONLY, GEORGIAN	1
4.2	3-050/00	ELBOW ASSEMBLY	1
4.3	3-049/00	ASSY. HOSE KIT, HANDSHOWER	1
5	92216	HEX L-KEY 1/8" HEX X 2-5/16" L.	1
6	P39001	HEX KEY 5/64, FOR 8-32 SET SCREW	1

ALL	A	UPDATE SPOUT & HS ESCUTCHEON ASSY, REPLACE HEX KEY/ TEMPLATE	2/19/2020	AMM
ZONE	REV.	DESCRIPTION	DATE	APPROVED
REVISIONS				

1261 LOGAN AVENUE
 COSTA MESA, CALIFORNIA 92626
 PHONE: 714.361.4800
 FAX: 714.617.3120

PHYLIRICH[®]
 Defining Luxury Since 1959

PROPRIETARY AND CONFIDENTIAL
 THE INFORMATION CONTAINED IN THIS DRAWING IS THE SOLE PROPERTY OF PHYLIRICH. ANY REPRODUCTION IN PART OR AS A WHOLE WITHOUT THE WRITTEN PERMISSION OF PHYLIRICH IS PROHIBITED.

NEXT ASSY	USED ON	FRACTIONS ±1/16"	DECIMALS X.X: ±.1 X.XX: ±.01 X.XXX: ±.005	ANGULAR ±2°
APPLICATION		MATERIAL	NAME	DATE
FINISH		DRAWN	AMM	8/20/2019
DO NOT SCALE DRAWING		CHECKED		

DECK TUB SET W/ HANDSHOWER, LEVER HANDLES, GEORGIAN & BARCELONA SERIES		
SIZE	ASM/PRT NO.	REV
B	K2141P1/00	A
SCALE: 1:3	WEIGHT: lbs.	SHEET 1 OF 2