

5

4

3

2

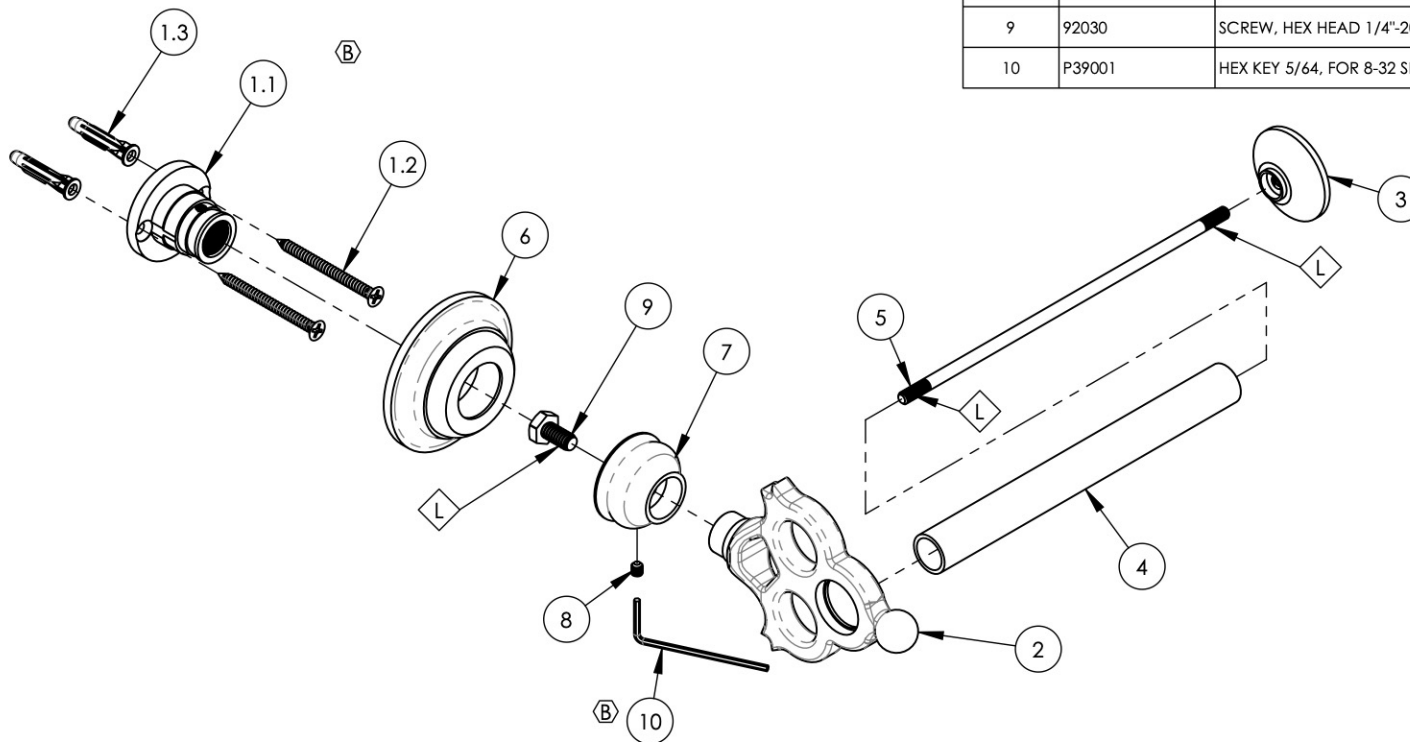
1

NOTE(S):

1. APPLY NSF COMPLIANT LOCTITE TO THREADED AREA.



ITEM NO.	PART NUMBER	DESCRIPTION	QTY.
1	2-103	MOUNTING KIT WITH ADJUSTABLE THREADED PIN	1
1.1	11050	MOUNTING KIT, WALL FLANGE	1
1.2	92234	SCREW FOR WOOD, PHIL. NO. 8 X 1-1/2"L	2
1.3	92235	ANCHOR FOR DRYWALL, TWIST-ACTION NO. 6-8 SIZE	2
2	2-148/00	SUB ASSY. SINGLE POST PAPER HOLDER, MAISON	1
3	11057/00	TP HOLDER, FINIAL. HEX MODERN 501 SERIES	1
4	11059/00	BAR TUBE FOR TP HOLDER, 501 SERIES	1
5	11061	3/16" DIA. ROD WITH THREAD FOR TP HOLDER	1
6	11277/00	ESCUTCHEON, ACCESSORIES, MAISON	1
7	11286/00	BASE, ACCESSORIES, MAISON SERIES	1
8	92008	SET SCREW, CUP POINT 8-32, 3/16" L.	1
9	92030	SCREW, HEX HEAD 1/4"-20 THRD, 7/16"L	1
10	P39001	HEX KEY 5/64, FOR 8-32 SET SCREW	1



ALL	B	UPDATE MOUNTING COMPONENTS, TEMPLATE, DWG NAME, ADD HEX KEY & CALL OUTS	8/3/2020	AMM
ZONE	REV.	DESCRIPTION	DATE	APPROVED
REVISIONS				

1261 LOGAN AVENUE  
 COSTA MESA, CALIFORNIA 92626  
 PHONE: 714.361.4800  
 FAX: 714.617.3120

**PHYLIRICH®**  
 Defining Luxury Since 1959

**PROPRIETARY AND CONFIDENTIAL**  
 THE INFORMATION CONTAINED IN THIS DRAWING IS THE SOLE PROPERTY OF PHYLIRICH. ANY REPRODUCTION IN PART OR AS A WHOLE WITHOUT THE WRITTEN PERMISSION OF PHYLIRICH IS PROHIBITED.

-	-	INTERPRET GEOMETRIC DIMENSIONING & TOLERANCING IN ACCORDANCE WITH ASME Y14.5-2009 & ASME Y14.41-2003 STANDARDS, UNLESS OTHERWISE SPECIFIED. DIMENSIONS ARE IN INCHES. TOLERANCES ARE:		
NEXT ASSY	USED ON	FRACTIONS ±1/16"	DECIMALS X.X: ±.1 X.XX: ±.01 X.XXX: ±.005	ANGULAR ±2°
MATERIAL	APPLICATION	NAME	DATE	
FINISH	DRAWN	LLO	11/5/2015	
<b>DO NOT SCALE DRAWING</b>	CHECKED	GRE		

**TOILET PAPER HOLDER, SINGLE POST, MAISON SERIES**

SIZE	ASM/PRT NO.	REV
<b>A</b>	164-74/00	<b>B</b>

SCALE: 1:2.75    WEIGHT: lbs.    SHEET 1 OF 2

5

4

3

2

1