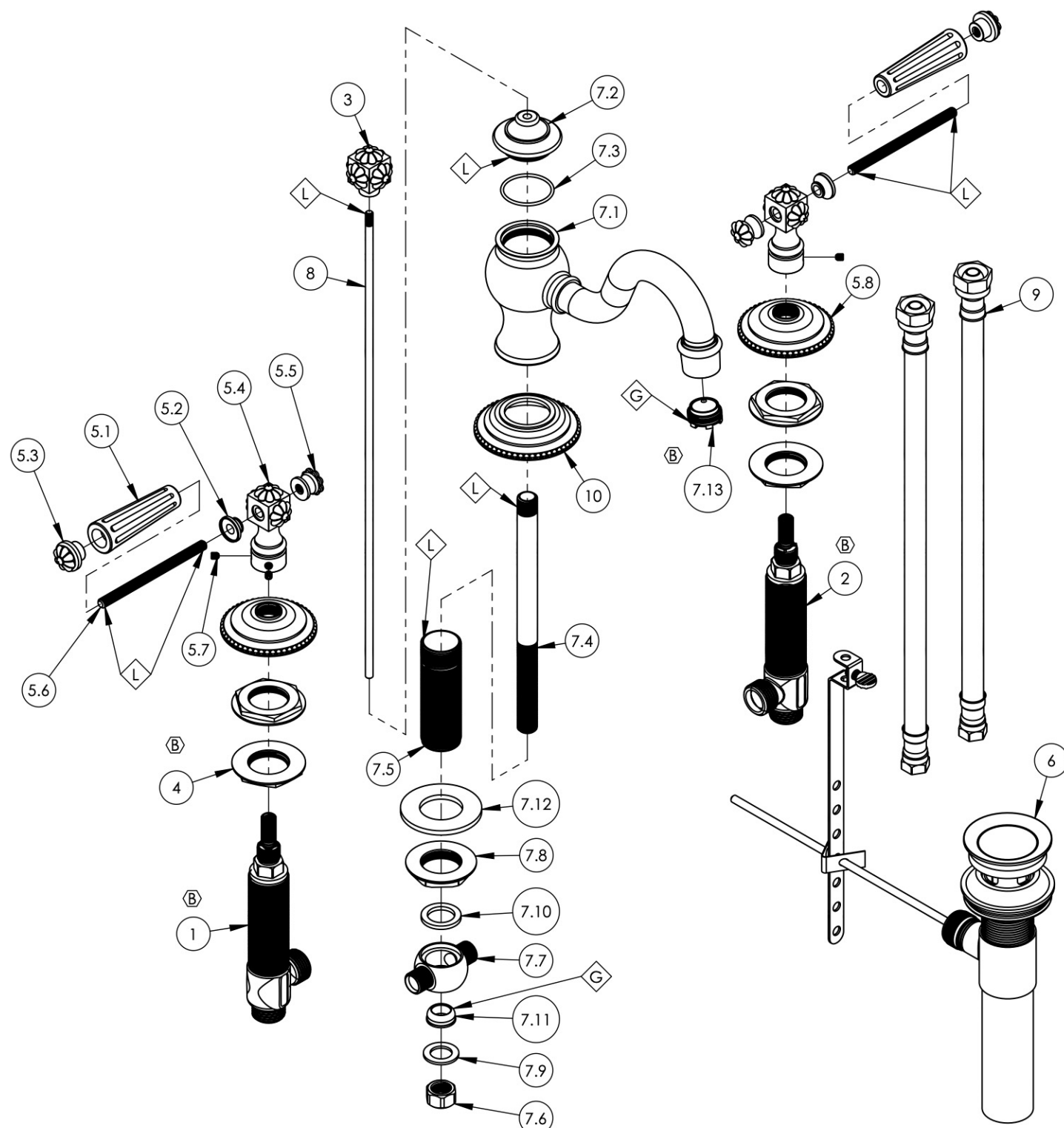


- NOTE(S):
1. APPLY NSF COMPLIANT GREASE TO ANY O-RING, SEALING JOINTS, AND/OR PIVOTAL POINTS.
  2. APPLY NSF COMPLIANT LOCTITE TO THREADED AREA.



| ITEM NO. | PART NUMBER | DESCRIPTION  | QTY. |
|----------|-------------|--|------|
| 1        | 1-149       | WIDESPREAD VALVE LAV 16PT, HOT, ONLY                           | 1    |
| 2        | 1-150       | WIDESPREAD VALVE LAV 16PT, COLD, ONLY                          | 1    |
| 3        | 2-115/00    | SUB-ASSY. FINIAL POP-UP, MARVELLE SERIES                       | 1    |
| 4        | 2-203       | MOUNTING NUT KIT, WIDESPREAD LAV                               | 4    |
| 5        | 3-030/00    | HANDLE LEVER, MARVELLE SEIRES                                  | 2    |
| 5.1      | 10541/00    | LEVER HANDLE INSERT, MARVELLE                                  | 1    |
| 5.2      | 11102/00    | BASE HANDLE FOR LEVER HEX TRADITIONAL 500 SERIES               | 1    |
| 5.3      | 2-111/00    | SUB-ASSY. END CAP FINIAL, MARVELLE                             | 1    |
| 5.4      | 2-113/00    | SUB-ASSY. LEVER TRASITION FINIAL, MARVELLE                     | 1    |
| 5.5      | 2-112/00    | SUB-ASSY. FINIAL EXTENSION BACK LEVER                          | 1    |
| 5.6      | 10543       | THREADED ROD, 1/4"-20 X 3"-5/8 L                               | 1    |
| 5.7      | 92008       | SET SCREW, CUP POINT 8-32, 3/16" L.                            | 2    |
| 5.8      | 10540/00    | ESCUTCHEON, MARVELLE SERIES                                    | 1    |
| 6        | 3-046/00    | POP-UP DRAIN ASSEMBLY (2-101, 2-102, & 2-246)                  | 1    |
| 7        | 3-341/00    | ASSY. SPOUT, WIDESPREAD, COURONNE/MARVELLE                     | 1    |
| 7.1      | 2-037/00    | SUB-ASSY. SPOUT COURONNE/MARVELLE SERIES                       | 1    |
| 7.2      | 11179/00    | SPOUT CAP, COURONNE SERIES                                     | 1    |
| 7.3      | 90025       | O-RING, 1-3/16"ID X 1/16"THK, AS-568-025                       | 1    |
| 7.4      | P33002      | 7" POP-UP GUIDE  | 1    |
| 7.5      | P33008      | LAV SPOUT NIPPLE   | 1    |
| 7.6      | 168B        | NUT FOR 3-WAY TEE  | 1    |
| 7.7      | 2003NL      | TEE VALVE FOR LAV WIDESPREAD                                   | 1    |
| 7.8      | 92037       | NUT, FLANGED 1"-20 THREAD                                      | 1    |
| 7.9      | 28A         | BRASS WASHER   | 1    |
| 7.10     | 427         | FIBER WASHER, 0.983" x 0.680" x 0.100" THK                     | 1    |
| 7.11     | 954A        | CONE WASHER  | 1    |
| 7.12     | P35317      | S.S. WASHER O.D 2" I.D 1" 1/16                                 | 1    |
| 7.13     | 11429       | AERATOR CACHE JUNIOR, 1.2GPM, M21.5X1.0, NEOPERL # 42.2260.450 | 1    |
| 8        | 10719/00    | POP-UP ROD, 10-24, 14" LONG                                    | 1    |
| 9        | 10982       | HOSE, 3/8" COMP. X 1/2" NPSM - 12"L                            | 2    |
| 10       | 11180/00    | ESCUTCHEON SPOUT, COURONNE SERIES                              | 1    |

| ALL  | B    | UPDATE TEMPLATE, ADD CALL OUTS, UPDATE AERATOR & VALVES | 7/27/2020 | AMM      |
|--|------|---|-----------|----------|
| ZONE   | REV. | DESCRIPTION   | DATE      | APPROVED |
| REVISIONS  |      |   |           |          |
| 1261 LOGAN AVENUE<br>COSTA MESA, CALIFORNIA 92626<br>PHONE: 714.361.4800<br>FAX: 714.617.3120  |      | <b>PHYLIRICH</b><br>Defining Luxury Since 1959          |           |          |
| <b>PROPRIETARY AND CONFIDENTIAL</b>  |      |   |           |          |
| THE INFORMATION CONTAINED IN THIS DRAWING IS THE SOLE PROPERTY OF PHYLIRICH. ANY REPRODUCTION IN PART OR AS A WHOLE WITHOUT THE WRITTEN PERMISSION OF PHYLIRICH IS PROHIBITED. |      |   |           |          |

|                             |         |   |   |                       |
|-----------------------------|---------|---|---|-----------------------|
| -                           | -       | INTERPRET GEOMETRIC DIMENSIONING & TOLERANCING IN ACCORDANCE WITH ASME Y14.5-2009 & ASME Y14.41-2003 STANDARDS. UNLESS OTHERWISE SPECIFIED, DIMENSIONS ARE IN INCHES. TOLERANCES ARE: |   |                       |
| NEXT ASSY                   | USED ON | <b>FRACTIONS</b><br>±1/16"  | <b>DECIMALS</b><br>X.X: ±.1<br>X.XX: ±.01<br>X.XXX: ±.005 | <b>ANGULAR</b><br>±2° |
| APPLICATION                 |         | MATERIAL  | NAME  | DATE                  |
| FINISH                      |         | DRAWN   | LLO   | 10/14/2015            |
| <b>DO NOT SCALE DRAWING</b> |         | CHECKED   | GRE   |                       |

|   |              |              |
|---|--------------|--------------|
| <b>WIDESPREAD FAUCET, LEVER HANDLES, MARVELLE</b> |              |              |
| SIZE  | ASM/PRT NO.  | REV          |
| <b>B</b>  | 162-02/00    | <b>B</b>     |
| SCALE: 1:6  | WEIGHT: lbs. | SHEET 1 OF 2 |