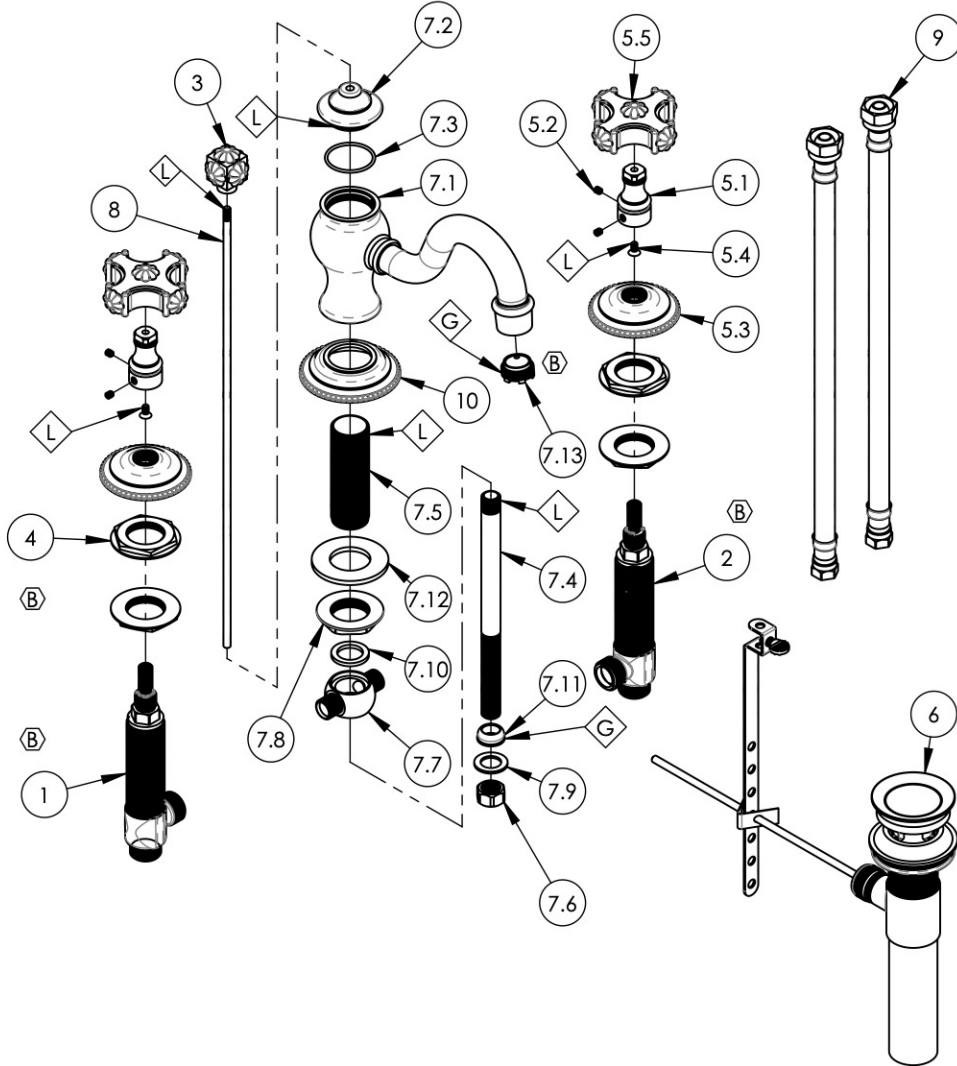


- NOTE(S):
1. APPLY NSF COMPLIANT GREASE TO ANY O-RING, SEALING JOINTS, AND/OR PIVOTAL POINTS. G
  2. APPLY NSF COMPLIANT LOCTITE TO THREADED AREA. L



ITEM NO.	PART NUMBER	DESCRIPTION	QTY.
1	1-149	WIDESPREAD VALVE LAV 16PT, HOT, ONLY	1
2	1-150	WIDESPREAD VALVE LAV 16PT, COLD, ONLY	1
3	2-115/00	SUB-ASSY. FINIAL POP-UP, MARVELLE SERIES	1
4	2-203	MOUNTING NUT KIT, WIDESPREAD LAV	4
5	3-029/00	CROSS HANDLE, MARVELLE SERIES	2
5.1	10542/00	BASE HANDLE, CROSS MARVELLE	1
5.2	92008	SET SCREW, CUP POINT 8-32, 3/16" L.	2
5.3	10540/00	ESCUTCHEON, MARVELLE SERIES	1
5.4	92146	SCREW, FLAT HD. 8-32 x 5/16"L	1
5.5	2-114/00	SUB-ASSY. HANDLE CROSS, MARVELLE SERIES	1
6	3-046/00	POP-UP DRAIN ASSEMBLY (2-101, 2-102, & 2-246)	1
7	3-341/00	ASSY. SPOUT, WIDESPREAD, COURONNE/MARVELLE	1
7.1	2-037/00	SUB-ASSY, SPOUT COURONNE/MARVELLE SERIES	1
7.2	11179/00	SPOUT CAP, COURONNE SERIES	1
7.3	90025	O-RING, 1-3/16"ID X 1/16"THK, AS-568-025	1
7.4	P33002	7" POP-UP GUIDE	1
7.5	P33008	LAV SPOUT NIPPLE	1
7.6	168B	NUT FOR 3-WAY TEE	1
7.7	2003NL	TEE VALVE FOR LAV WIDESPREAD	1
7.8	92037	NUT, FLANGED 1"-20 THREAD	1
7.9	28A	BRASS WASHER	1
7.10	427	FIBER WASHER, 0.983" x 0.680" x 0.100" THK	1
7.11	954A	CONE WASHER	1
7.12	P35317	S.S. WASHER O.D 2" I.D 1" 1/16	1
7.13	11429	AERATOR CACHE JUNIOR, 1.2GPM, M21.5X1.0, NEOPERL # 42.2260.450	1
8	10719/00	POP-UP ROD, 10-24, 14" LONG	1
9	10982	HOSE, 3/8" COMP. X 1/2" NPSM - 12'L	2
10	11180/00	ESCUTCHEON SPOUT, COURONNE SERIES	1

ALL	B	UPDATE DWG NAME, TEMPLATE, AERATOR, & VALVES, ADD CALL OUTS	7/27/2020	AMM
ZONE	REV.	DESCRIPTION	DATE	APPROVED
REVISIONS				

1261 LOGAN AVENUE  
COSTA MESA, CALIFORNIA 92626  
PHONE: 714.361.4800  
FAX: 714.617.3120

**PHYL RICH**<sup>®</sup>  
Defining Luxury Since 1959

**PROPRIETARY AND CONFIDENTIAL**  
THE INFORMATION CONTAINED IN THIS DRAWING IS THE SOLE PROPERTY OF PHYL RICH. ANY REPRODUCTION IN PART OR AS A WHOLE WITHOUT THE WRITTEN PERMISSION OF PHYL RICH IS PROHIBITED.

-	-	INTERPRET GEOMETRIC DIMENSIONING & TOLERANCING IN ACCORDANCE WITH ASME Y14.5-2009 & ASME Y14.41-2003 STANDARDS, UNLESS OTHERWISE SPECIFIED. DIMENSIONS ARE IN INCHES. TOLERANCES ARE:		
NEXT ASSY	USED ON	FRACTIONS ±1/16"	DECIMALS X.X: ±.1 X.XX: ±.01 X.XXX: ±.005	ANGULAR ±2°
MATERIAL	APPLICATION	NAME	DATE	
FINISH	DRAWN	LLO	12/3/2015	
<b>DO NOT SCALE DRAWING</b>		CHECKED	GRE	

**WIDESPREAD FAUCET, CROSS HANDLES, MARVELLE**

SIZE **A** ASM/PRT NO. **162-01/00** REV **B**

SCALE: 1:5 WEIGHT: lbs. SHEET 1 OF 2