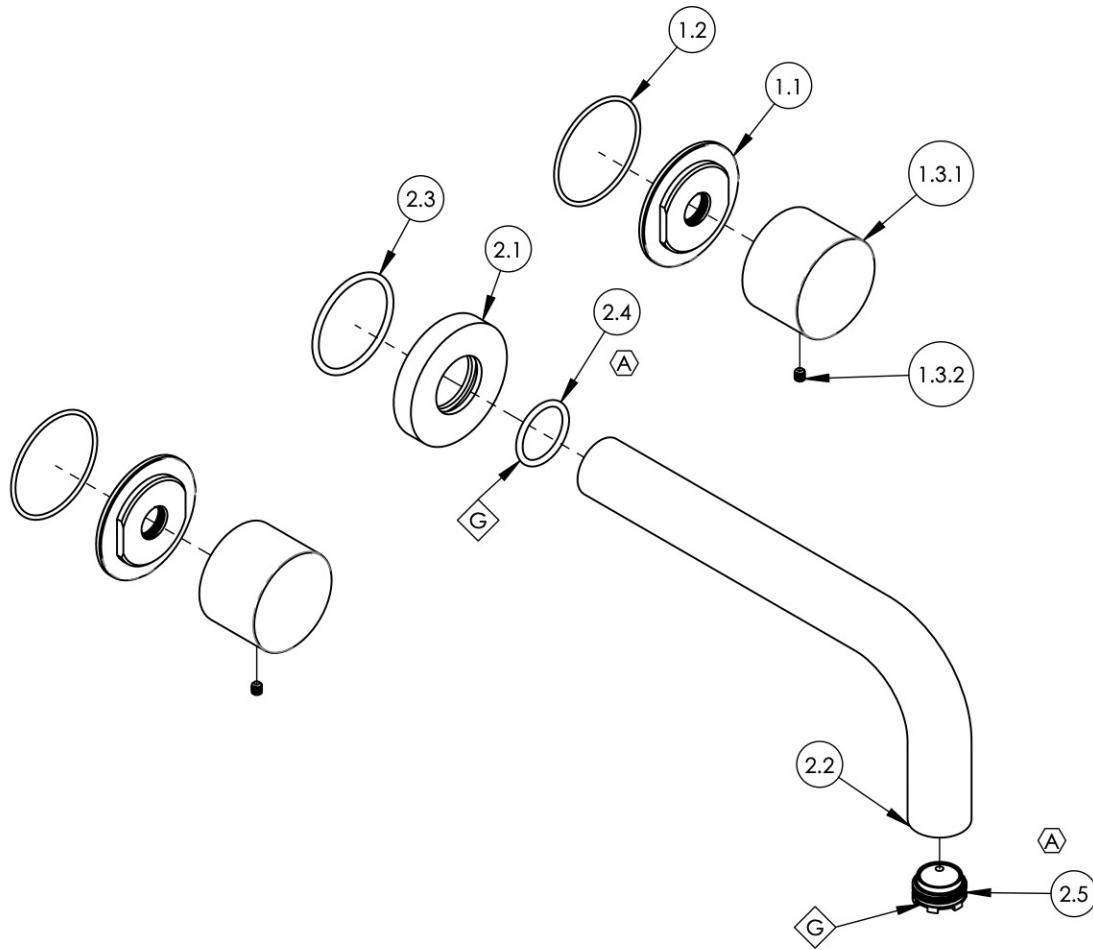


NOTE(S):  
 1. APPLY NSF COMPLIANT GREASE TO ANY O-RING, SEALING JOINTS, AND/OR PIVOTAL POINTS.



ITEM NO.	PART NUMBER	DESCRIPTION	QTY.
1	3-386/00	SUB ASSY. SMOOTH HANDLE, BASIC II	2
1.1	11164/00	ESCUTCHEON BASE, CONTEMP. BASIC II	1
1.2	90031	O-RING, 1-3/4"ID X 1/16"THK, AS-568-031	1
1.3	2-248/00	HANDLE SMOOTH, BASIC II	1
1.3.1	10433/00	BASE HANDLE, CONTEMP. BASIC II	1
1.3.2	92008	SET SCREW, CUP POINT 8-32, 3/16" L.	1
2	3-388/00	SPOUT ASSY. WALL LAV, BASIC II, BASIC	1
2.1	P19017/00	ESCUTCHEON, FOR SPOUT	1
2.2	P19018/00	7-1/2" WALL LAV SPOUT, BASIC SERIES	1
2.3	90129	O-RING, 1-9/16"ID X 3/32THK, AS-568-129	1
2.4	90119	O-RING, 15/16"ID X 1-1/8"OD X 3/32"THK, AS-568-119	1
2.5	11429	AERATOR CACHE JUNIOR, 1.2GPM, M21.5X1.0, NEOPERL # 42.2260.450	1

ALL	A	UPDATE TEMPLATE & SPOUT ASSY. ADD CALL OUTS	4/1/2020	AMM
ZONE	REV.	DESCRIPTION	DATE	APPROVED
REVISIONS				

1261 LOGAN AVENUE  
 COSTA MESA, CALIFORNIA 92626  
 PHONE: 714.361.4800  
 FAX: 714.617.3120

**PHYLIRICH**<sup>®</sup>  
 Defining Luxury Since 1959

**PROPRIETARY AND CONFIDENTIAL**  
 THE INFORMATION CONTAINED IN THIS DRAWING IS THE SOLE PROPERTY OF PHYLIRICH. ANY REPRODUCTION IN PART OR AS A WHOLE WITHOUT THE WRITTEN PERMISSION OF PHYLIRICH IS PROHIBITED.

-	-	INTERPRET GEOMETRIC DIMENSIONING & TOLERANCING IN ACCORDANCE WITH ASME Y14.5-2009 & ASME Y14.41-2003 STANDARDS, UNLESS OTHERWISE SPECIFIED. DIMENSIONS ARE IN INCHES. TOLERANCES ARE:		
NEXT ASSY	USED ON	<b>FRACTIONS</b> ±1/16"	<b>DECIMALS</b> X.X: ±.1 X.XX: ±.01 X.XXX: ±.005	<b>ANGULAR</b> ±2°
APPLICATION		MATERIAL	NAME	DATE
FINISH		DRAWN	11/6/2015	
<b>DO NOT SCALE DRAWING</b>		CHECKED		

**WALL LAVATORY SET, SMOOTH HANDLES, 7-1/2" SPOUT, BASIC II SERIES**

SIZE	ASM/PRT NO.	REV
<b>A</b>	230-12/00	<b>A</b>
SCALE: 1:3	WEIGHT: lbs.	SHEET 1 OF 2