

NOTE(S):  
PART NUMBER, "/00" DENOTES PART SHALL HAVE FINISH.

1. EXAMPLE OF SPLIT FINISH CODE:  
A. 3-373/026X030

2. SPLIT FINISH CODES:

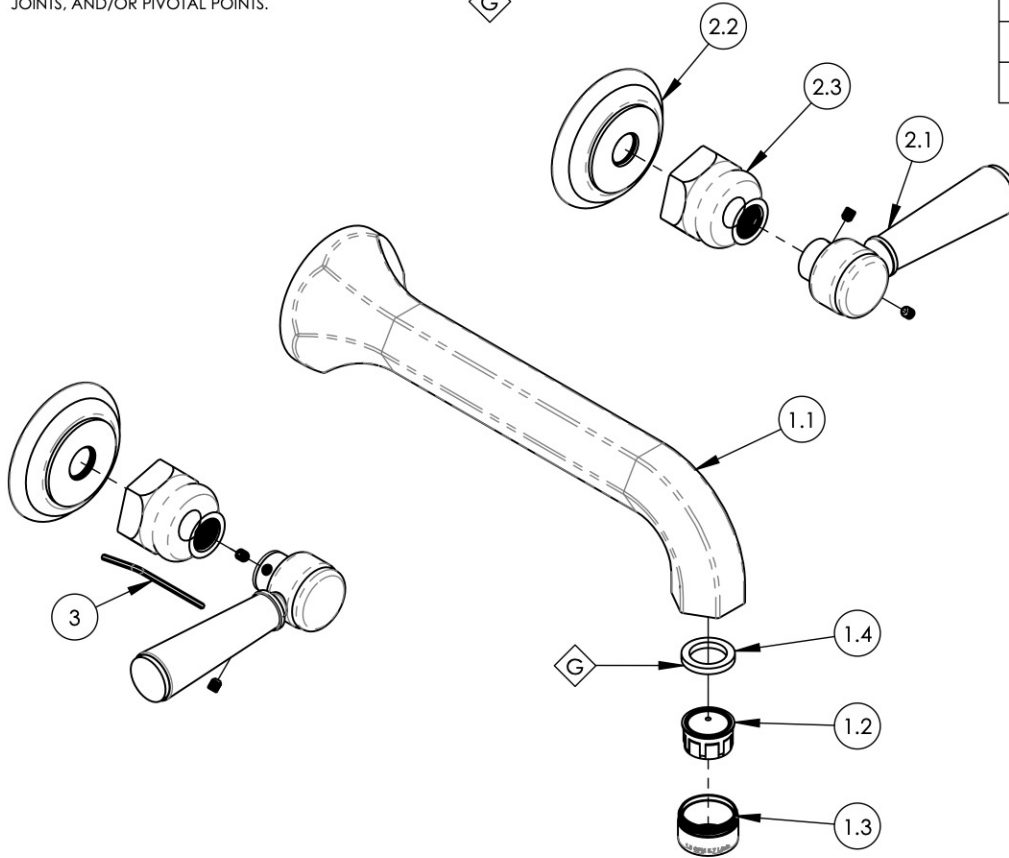
- A. BLACK MARBLE = 3-373/00X030
- B. WHITE MARBLE = 3-373/00X031
- C. SOAPSTONE = 3-373/00X032

3. AVAILABLE HANDLE STONE OPTIONS:

- A. BLACK MARBLE = 11328 (030)
- B. WHITE MARBLE = 11329 (031)
- C. SOAPSTONE = 11330 (032)

4. APPLY NSF COMPLIANT GREASE TO ANY O-RING, SEALING JOINTS, AND/OR PIVOTAL POINTS. G

ITEM NO.	PART NUMBER	DESCRIPTION	QTY.
1.1	3-146/00	SPOUT, WALL LAV, 500/501 SERIES	1
1.1	10427/00	SPOUT WALL, CAST BRASS, HEX	1
1.2	11426	AERATOR DROP-IN INSERT 1.2 GPM, NEOPERL # 40.2060.00000	1
1.3	30032/00	AERATOR HOUSING 15/16" MALE HOUSING	1
1.4	30030	RUBBER SEAL WASHER AERATOR, NEOPERL PRT # BW.7110.1	1
2	3-373/00	MARBLE LEVER HANDLE ASSY., WALL/SHOWER	2
2.1	2-142/00	MARBLE LEVER HANDLE, 500 SERIES, HEX TRADITIONAL	1
2.2	10618/00	ESCUTCHEON, TRADITIONAL 500	1
2.3	10621/00	BASE HUB NUT	1
3	P39001	HEX KEY 5/64, FOR 8-32 SET SCREW	1



ZONE	REV.	DESCRIPTION	DATE	APPROVED
REVISIONS				

1261 LOGAN AVENUE  
COSTA MESA, CALIFORNIA 92626  
PHONE: 714.361.4800  
FAX: 714.617.3120

**PHYLIRICH**<sup>®</sup>  
Defining Luxury Since 1959

**PROPRIETARY AND CONFIDENTIAL**  
THE INFORMATION CONTAINED IN THIS DRAWING IS THE SOLE PROPERTY OF PHYLIRICH. ANY REPRODUCTION IN PART OR AS A WHOLE WITHOUT THE WRITTEN PERMISSION OF PHYLIRICH IS PROHIBITED.

-	-	INTERPRET GEOMETRIC DIMENSIONING & TOLERANCING IN ACCORDANCE WITH ASME Y14.5-2009 & ASME Y14.41-2003 STANDARDS, UNLESS OTHERWISE SPECIFIED. DIMENSIONS ARE IN INCHES. TOLERANCES ARE:		
NEXT ASSY	USED ON	<b>FRACTIONS</b> ±1/16"	<b>DECIMALS</b> X.X: ±.1 X.XX: ±.01 X.XXX: ±.005	<b>ANGULAR</b> ±2°
APPLICATION		MATERIAL	NAME	DATE
FINISH		DRAWN	AMM	4/27/2020
<b>DO NOT SCALE DRAWING</b>		CHECKED		

WALL LAV SET, MARBLE, HEX TRADITIONAL

SIZE	ASM/PRT NO.	REV
<b>A</b>	500-13/00	-

SCALE: 1:3      WEIGHT: lbs.      SHEET 1 OF 2