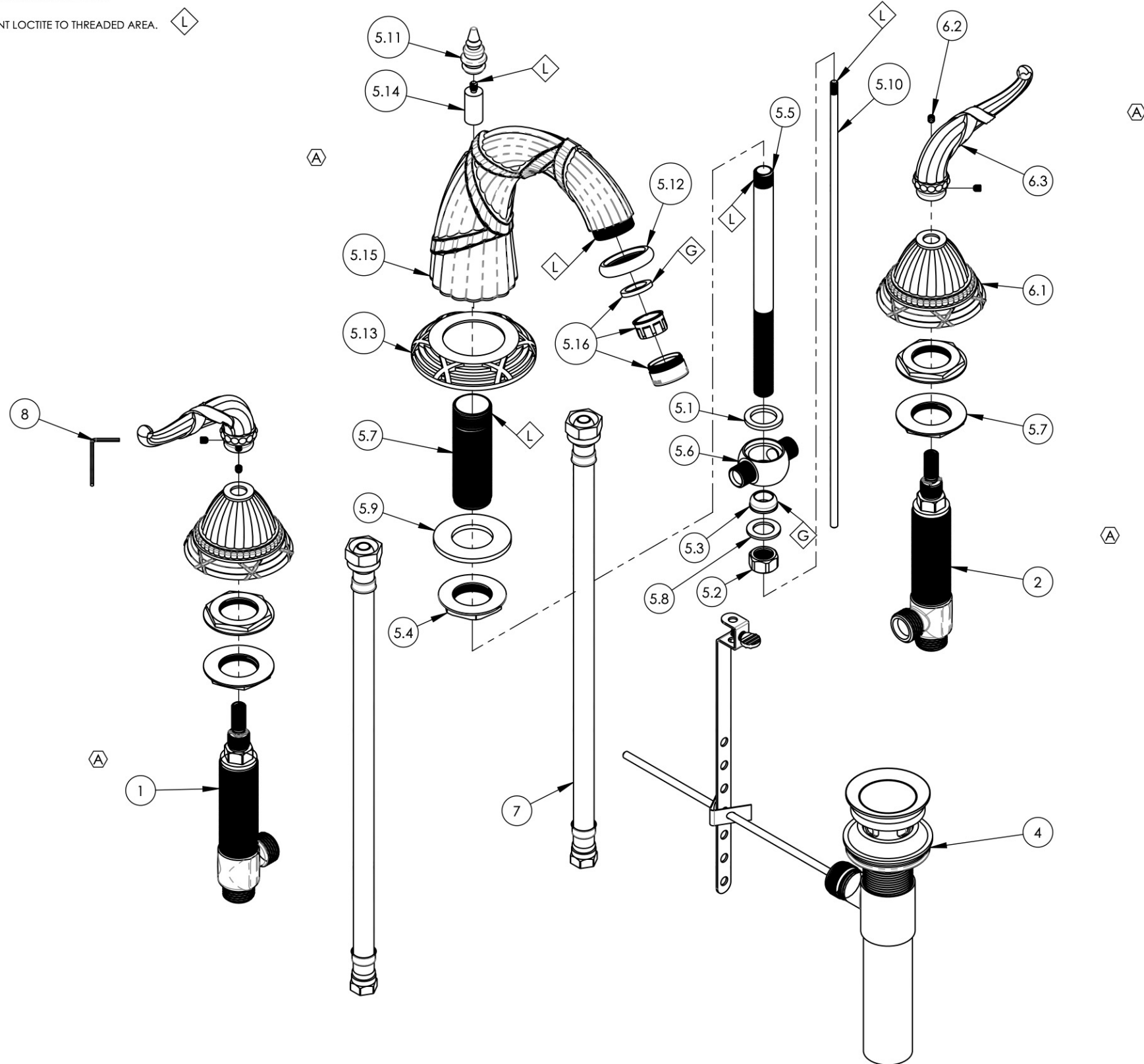


NOTE(S):  
 1. APPLY NSF COMPLIANT GREASE TO ANY O-RING, SEALING JOINTS, AND/OR PIVOTAL POINTS. G  
 2. APPLY NSF COMPLIANT LOCTITE TO THREADED AREA. L



ITEM NO.	PART NUMBER	DESCRIPTION	QTY.
1	1-149	WIDESPREAD VALVE LAV 16PT, HOT, ONLY	1
2	1-150	WIDESPREAD VALVE LAV 16PT, COLD, ONLY	1
5.7	2-203	MOUNTING NUT KIT, WIDESPREAD LAV	4
4	3-046/00	POP-UP DRAIN ASSEMBLY (2-101, 2-102, & 2-246)	1
5	3-273/00	WIDESPREAD FAUCET, P03012, HIGH LAV SPOUT, RIBBON & REED	1
5.1	427	FIBER WASHER, 0.983" x 0.680" x 0.100" THK	1
5.2	168B	NUT FOR 3-WAY TEE	1
5.3	954A	CONE WASHER	1
5.4	92037-BL	NUT, FLANGED 1"-20 THREAD	1
5.5	P33002	7" POP-UP GUIDE	1
5.6	2003NL	TEE VALVE FOR LAV WIDESPREAD	1
5.7	P33008	LAV SPOUT NIPPLE	1
5.8	28A	BRASS WASHER	1
5.9	P35317	S.S. WASHER O.D 2" I.D 1" 1/16	1
5.10	10719/00	POP-UP ROD, 10-24, 14" LONG	1
5.11	P04020/00	K141 POPUP KNOB	1
5.12	P03010_2/00	AERATOR SURROUND	1
5.13	P26013/00	K1137 SPOUT BASE	1
5.14	P04021/00	POP-UP EXTENSION	1
5.15	P03012/00	HIGH SPOUT, RIBBON AND REED	1
5.16	3-059/00	AERATOR, 15/16" MALE HOUSING	1
6	3-274/00	STRAIGHT LEVER HANDLE, RIBBON & REED	2
6.1	P02007/00	K137 COVER PLATE COMPLETE	1
6.2	92008	SET SCREW, CUP POINT 8-32, 3/16" L.	2
6.3	2-152/00	SUB ASSY. HANDLE RIBBON & REED	1
7	10982	HOSE, 3/8" COMP. X 1/2" NPSM - 12"L	2
8	P39001	HEX KEY 5/64, FOR 8-32 SET SCREW	1

ALL	A	ADD SUBASSYS, UPDATE TEMPLATE, DWG NAME, & VALVES	7/8/2020	AMM
ZONE	REV.	DESCRIPTION	DATE	APPROVED
REVISIONS				
		1261 LOGAN AVENUE COSTA MESA, CALIFORNIA 92626 PHONE: 714.361.4800 FAX: 714.617.3120	<b>PHYLIRICH</b> Defining Luxury Since 1959	
		<b>PROPRIETARY AND CONFIDENTIAL</b> THE INFORMATION CONTAINED IN THIS DRAWING IS THE SOLE PROPERTY OF PHYLIRICH. ANY REPRODUCTION IN PART OR AS A WHOLE WITHOUT THE WRITTEN PERMISSION OF PHYLIRICH IS PROHIBITED.		

NEXT ASSY		USED ON		INTERPRET GEOMETRIC DIMENSIONING & TOLERANCING IN ACCORDANCE WITH ASME Y14.5-2009 & ASME Y14.41-2003 STANDARDS. UNLESS OTHERWISE SPECIFIED, DIMENSIONS ARE IN INCHES. TOLERANCES ARE:	
APPLICATION		FRACTIONS ±1/16"	DECIMALS X.X: ±.1 X.XX: ±.01 X.XXX: ±.005	ANGULAR ±2°	
MATERIAL		NAME		DATE	SCALE: 1:3.25
FINISH		DRAWN		LLO 7/17/2013	
DO NOT SCALE DRAWING		CHECKED	GRE	WEIGHT: lbs.	

**WIDESPREAD LAV, HIGH SPOUT, RIBBON & REED**

SIZE **B** ASM/PRT NO. **K337/00** REV **A**

SHEET 1 OF 2