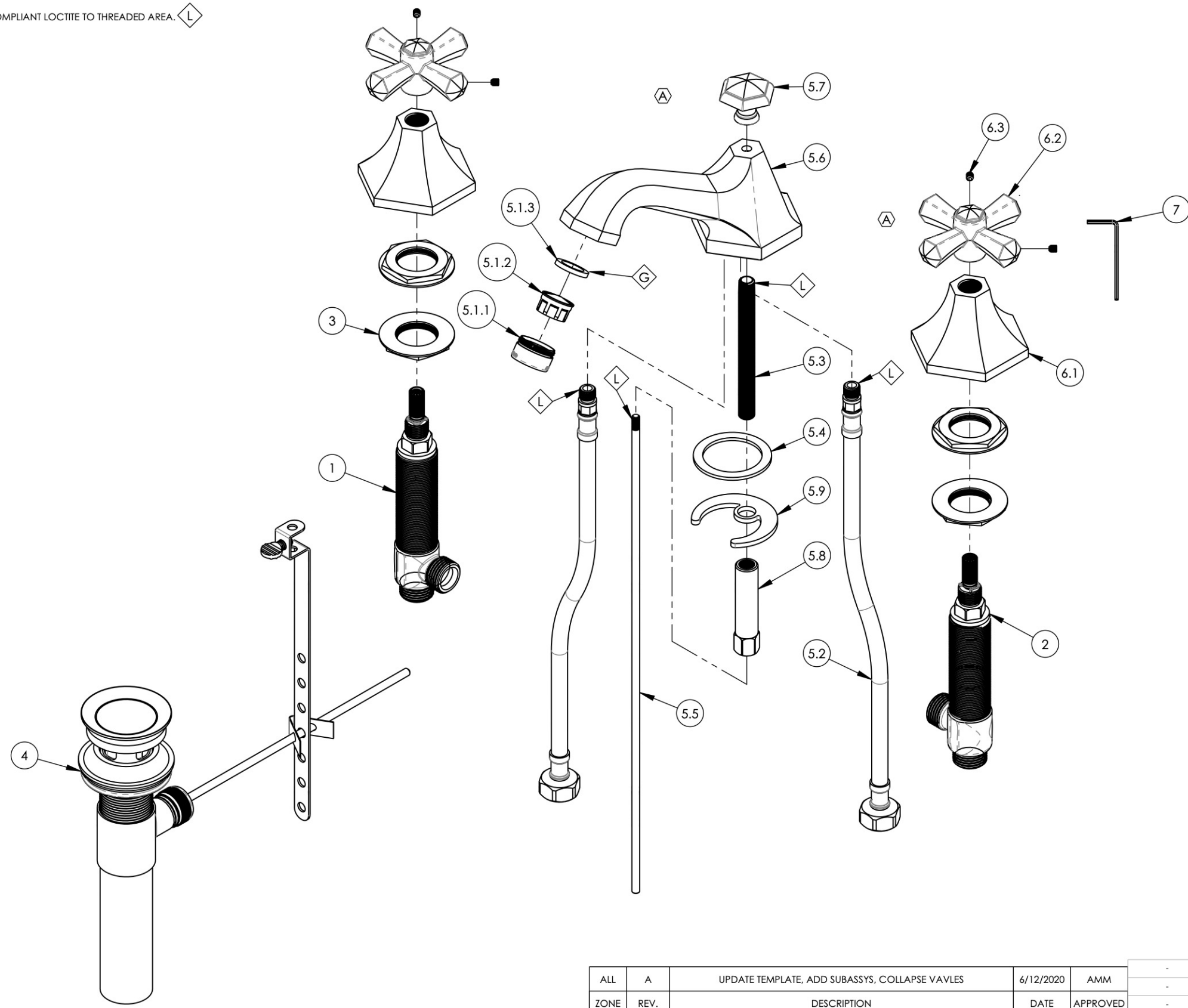


NOTE(S):
 1. APPLY NSF COMPLIANT GREASE TO ANY O-RING, SEALING JOINTS, AND/OR PIVOTAL POINTS. G
 2. APPLY NSF COMPLIANT LOCTITE TO THREADED AREA. L



ITEM NO.	PART NUMBER	DESCRIPTION	QTY.
1	1-149	WIDESPREAD VALVE LAV 16PT. HOT, ONLY	1
2	1-150	WIDESPREAD VALVE LAV 16PT. COLD, ONLY	1
3	2-203	MOUNTING NUT KIT, WIDESPREAD LAV	4
4	3-046/00	POP-UP DRAIN ASSEMBLY (2-101, 2-102, & 2-246)	1
5	3-238/00	SPOUT ONLY, WIDESPREAD LAV, LE VERRE & LA CROSSE	1
5.1	3-059/00	AERATOR, 15/16" MALE HOUSING	1
5.1.1	30032/00	AERATOR HOUSING 15/16" MALE HOUSING	1
5.1.2	11426	AERATOR DROP-IN INSERT 1.2 GPM, NEOPERL # 40.2060.00000	1
5.1.3	30030	RUBBER SEAL WASHER AERATOR, NEOPERL PRT # BW.7110.1	1
5.2	10720	HOSE, M10 TO 1/2NPSM	2
5.3	10182	NIPPLE, SHANK 1/8"-27NPSM X 4"L	1
5.4	P34005	GASKET FOR TEE LESS.	1
5.5	10719/00	POP-UP ROD, 10-24, 14" LONG	1
5.6	P03016/00	SPOUT, HEX LA VERRE / LE CROSSE	1
5.7	P04005/00	POP-UP KNOB FOR K170/K171	1
5.8	P34004	2" EXTENSION NUT F/TEE LEES SPOUT	1
5.9	P34002	C-WASHER FOR TEE LESS SPOUT	1
6	3-240/00	CROSS HANDLE, LE VERRE & LA CROSSE SERIES	2
6.1	P02020/00	ESCUTCHEON, COVER PLATE K170&K171	1
6.2	P01025/00	HANDLE, CROSS HEX SHAPES FOR K171	1
6.3	92008	SET SCREW, CUP POINT 8-32, 3/16" L.	2
7	p39001	HEX KEY 5/64, FOR 8-32 SET SCREW	1

ALL	A	UPDATE TEMPLATE, ADD SUBASSYS, COLLAPSE VAVLES	6/12/2020	AMM
ZONE	REV.	DESCRIPTION	DATE	APPROVED
REVISIONS				
1261 LOGAN AVENUE COSTA MESA, CALIFORNIA 92626 PHONE: 714.361.4800 FAX: 714.617.3120		PHYLIRICH Defining Luxury Since 1959		
PROPRIETARY AND CONFIDENTIAL				
THE INFORMATION CONTAINED IN THIS DRAWING IS THE SOLE PROPERTY OF PHYLIRICH. ANY REPRODUCTION IN PART OR AS A WHOLE WITHOUT THE WRITTEN PERMISSION OF PHYLIRICH IS PROHIBITED.				

NEXT ASSY	USED ON	FRACTIONS ±1/16"	DECIMALS X.X: ±.1 X.XX: ±.01 X.XXX: ±.005	ANGULAR ±2°
APPLICATION		MATERIAL	NAME	DATE
FINISH		DRAWN	AMM	7/22/2019
DO NOT SCALE DRAWING		CHECKED		

WIDESPREAD FAUCET, CROSS HANDLES, LOW SPOUT, LA VERRE & LA CROSSE		
SIZE B	ASM/PRT NO. K171/00	REV A
SCALE: 1:2.75	WEIGHT: lbs.	SHEET 1 OF 2