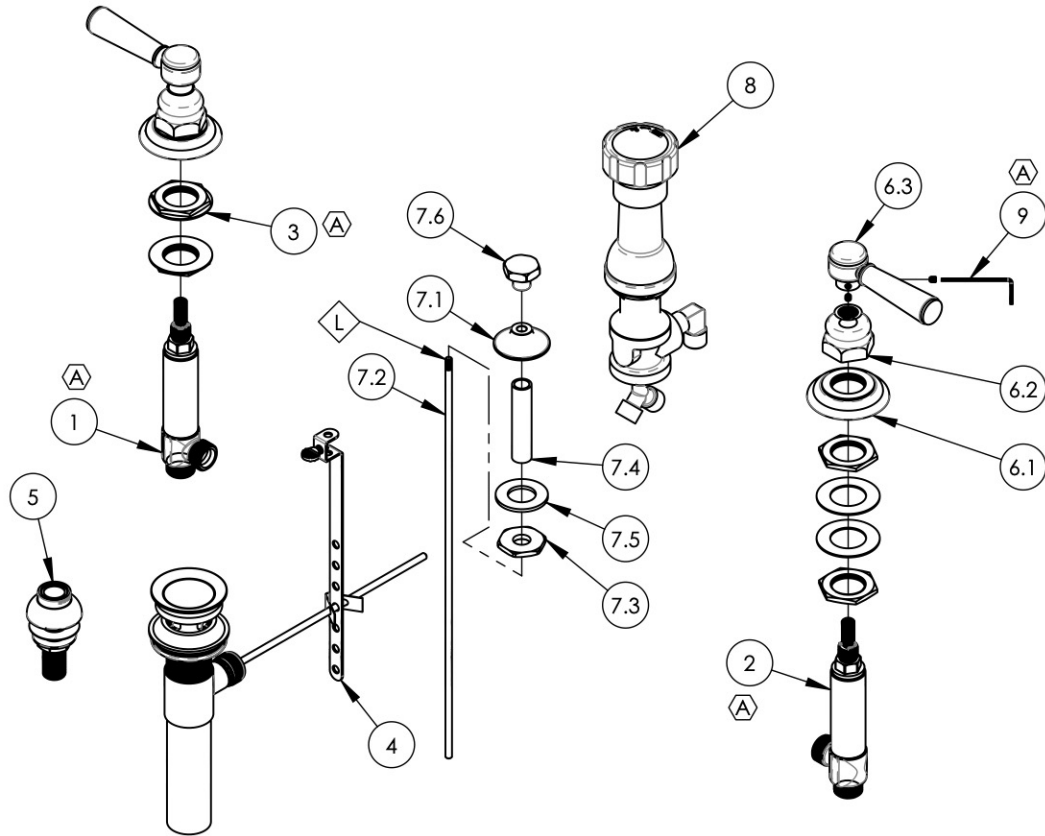


NOTE(S):

1. APPLY NSF COMPLIANT LOCTITE TO THREADED AREA.



ITEM NO.	PART NUMBER	DESCRIPTION	QTY.
1	1-149	WIDESPREAD VALVE LAV 16PT, HOT, ONLY	1
2	1-150	WIDESPREAD VALVE LAV 16PT, COLD, ONLY	1
3	2-203	MOUNTING NUT KIT, WIDESPREAD LAV	4
4	3-046/00	POP-UP DRAIN ASSEMBLY (2-101, 2-102, & 2-246)	1
5	3-085/00	ASSY, BIDET SPRAYER	1
6	3-140/00	LEVER HANDLE, HEX TRADITIONAL 500 SERIES,	2
6.1	10619/00	ESCUTCHEON, TRADITIONAL LAV 1"-20	1
6.2	10621/00	BASE HUB NUT	1
6.3	2-141/00	SUB ASSY. LEVER HANDLE, 500 SERIES	1
7	3-145/00	ASSY. BIDET POP-UP ROD, 500/501 SERIES	1
7.1	P09007/00	K4160 POP UP GUIDE	1
7.2	10719/00	POP-UP ROD, 10-24, 14" LONG	1
7.3	P09006	SPECIAL HEX F/BIDET SPRAYER	1
7.4	P32010	9/16-20 x 56 NIPPLE FOR COMPRESSION STEM	1
7.5	P35026	3/4" SAE FLAT WASHER	1
7.6	10920/00	POP-UP KNOB, HEX TRADITIONAL	1
8	3-160/00	BIDET DIVERTER, COMPLETE	1
9	P39001	HEX KEY 5/64, FOR 8-32 SET SCREW	1

ALL	REV.	DESCRIPTION	DATE	APPROVED
A		UPDATE DWG NAME, TEMPLATE, VALVE ASSY TO SEPERATE COMPONENTS, ADD HEX KEY/ NOTES	12/30/2019	AMM
REVISIONS				

1261 LOGAN AVENUE  
COSTA MESA, CALIFORNIA 92626  
PHONE: 714.361.4800  
FAX: 714.617.3120

**PHYLIRICH**<sup>®</sup>  
Defining Luxury Since 1959

**PROPRIETARY AND CONFIDENTIAL**  
THE INFORMATION CONTAINED IN THIS DRAWING IS THE SOLE PROPERTY OF PHYLIRICH. ANY REPRODUCTION IN PART OR AS A WHOLE WITHOUT THE WRITTEN PERMISSION OF PHYLIRICH IS PROHIBITED.

INTERPRET GEOMETRIC DIMENSIONING & TOLERANCING IN ACCORDANCE WITH ASME Y14.5-2009 & ASME Y14.41-2003 STANDARDS, UNLESS OTHERWISE SPECIFIED. DIMENSIONS ARE IN INCHES. TOLERANCES ARE:	FRACTIONS ±1/16"	DECIMALS X.X: ±.1 X.XX: ±.01 X.XXX: ±.005	ANGULAR ±2°
NEXT ASSY	USED ON		
APPLICATION			
MATERIAL	NAME	DATE	
FINISH	DRAWN	LLO	9/15/2015
<b>DO NOT SCALE DRAWING</b>	CHECKED	GRE	

**BIDET SET, FOUR HOLE, LEVER, HEX TRADITIONAL**

SIZE	ASM/PRT NO.	REV
<b>A</b>	500-61/00	<b>A</b>
SCALE: 1:5.5	WEIGHT: lbs.	SHEET 1 OF 2