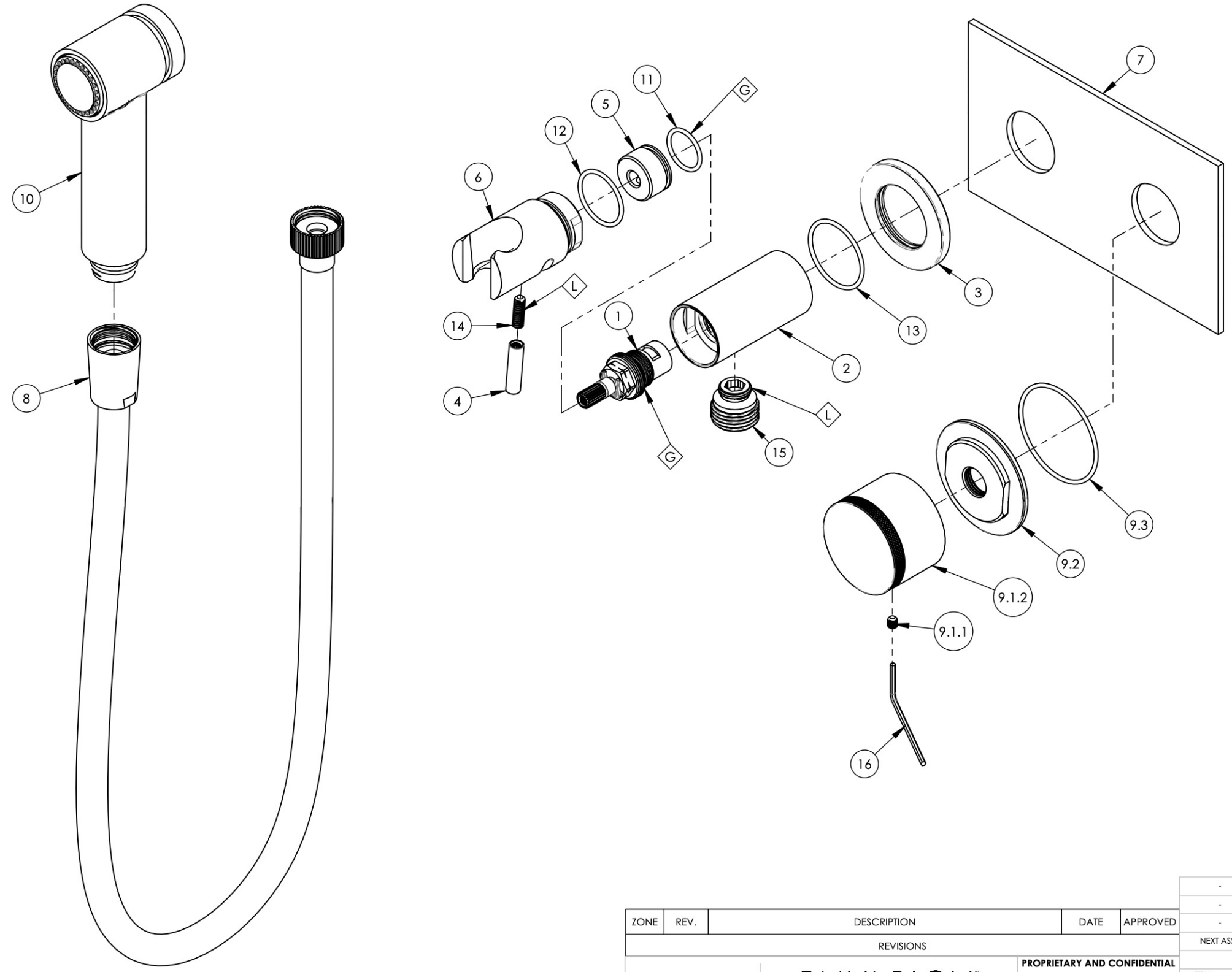


- NOTE(S):
1. APPLY NSF COMPLIANT GREASE TO ANY O-RING, SEALING JOINTS, AND/OR PIVOTAL POINTS. G
 2. APPLY NSF COMPLIANT LOCTITE TO THREADED AREA. L

ITEM NO.	PART NUMBER	DESCRIPTION	QTY.
1	10739	CARTRIDGE, VALVE 3/8" G RIGHT CLOSING	1
2	10859/00	BODY, HANDSHOWER HOLDER W/ INTEGRATED VOL. CTRL.	1
3	10860/00	ESCUTCHEON, FLANGE	1
4	10861/00	HANDLE, LEVER 10-24 UNC	1
5	10862/00	HIDDEN HUB, HANDSHOWER VOL. CTRL.	1
6	10863/00	SHOWER HOOK, INTEGRATED HANDLE	1
7	11212/00	PLATE, TWO HANDLE, BASIC SERIES	1
8	3-049/00	ASSY. HOSE KIT, HANDSHOWER	1
9	3-329/00	SUB ASSY. KNURLED HANDLE, BASIC II	1
9.1	2-247/00	HANDLE KNURLED, BASIC II	1
9.1.1	92008	SET SCREW, CUP POINT 8-32, 3/16" L.	1
9.1.2	11165/00	BASE HANDLE, CONTEMP. BASIC II	1
9.2	11164/00	ESCUTCHEON BASE, CONTEMP. BASIC II	1
9.3	90031	O-RING, 1-3/4" ID X 1/16" THK, AS-568-031	1
10	3-410/00	ASSY. HAND SPRAY	1
11	90017	O-RING, 11/16" ID X 13/16" OD X 1/16" THK, AS-568-017	1
12	90021	O-RING, 15/16" ID X 1-1/16" OD X 1/16" THK, AS-568-021	1
13	90025	O-RING, 1-3/16" ID X 1/16" THK, AS-568-025	1
14	92152	SET SCREW, CUP PT. 10-24 UNC X 5/8" L.	1
15	P18011/00	CONNECTOR OUTLET 1/2", HOUSING OV10	1
16	P39001	HEX KEY 5/64, FOR 8-32 SET SCREW	1



ZONE	REV.	DESCRIPTION	DATE	APPROVED
REVISIONS				
PHYLIRICH Defining Luxury Since 1959				
PROPRIETARY AND CONFIDENTIAL THE INFORMATION CONTAINED IN THIS DRAWING IS THE SOLE PROPERTY OF PHYLIRICH. ANY REPRODUCTION IN PART OR AS A WHOLE WITHOUT THE WRITTEN PERMISSION OF PHYLIRICH IS PROHIBITED.				

INTERPRET GEOMETRIC DIMENSIONING & TOLERANCING IN ACCORDANCE WITH ASME Y14.5-2009 & ASME Y14.41-2003 STANDARDS. UNLESS OTHERWISE SPECIFIED, DIMENSIONS ARE IN INCHES. TOLERANCES ARE:			
FRACTIONS ±1/16"	DECIMALS X.X: ±.1 X.XX: ±.01 X.XXX: ±.005	ANGULAR ±2°	
NEXT ASSY	USED ON	APPLICATION	
MATERIAL	NAME	DATE	
FINISH	DRAWN	AMM	4/3/2020
DO NOT SCALE DRAWING	CHECKED		

TRIM, WALL MOUNTED BIDET, KNURLED HANDLE, BASIC II		
SIZE	ASM/PRT NO.	REV
B	230-65/00	-
SCALE: 1:2	WEIGHT: lbs.	SHEET 1 OF 2

1261 LOGAN AVENUE
 COSTA MESA, CALIFORNIA 92626
 PHONE: 714.361.4800
 FAX: 714.617.3120