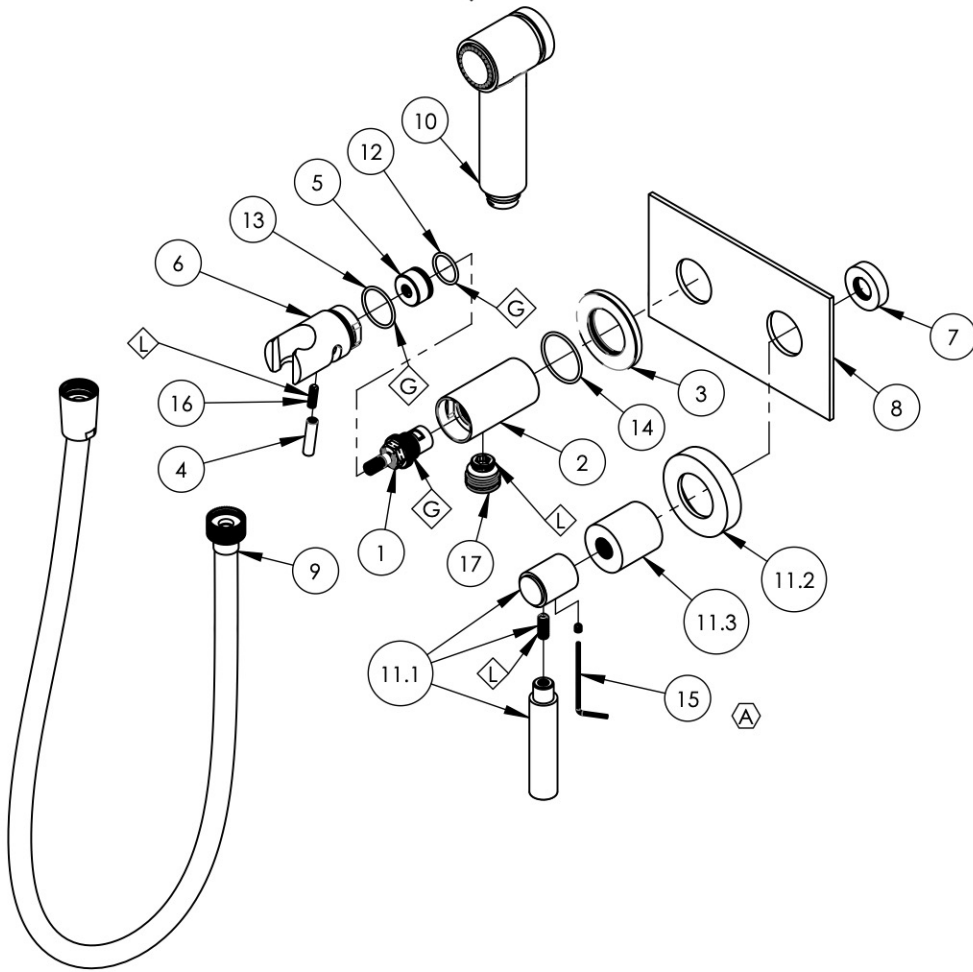


- NOTE(S):
- PART NUMBER, "/00" DENOTES PART SHALL HAVE FINISH.
 - APPLY NSF COMPLIANT GREASE TO ANY O-RING, SEALING JOINTS, AND/OR PIVOTAL POINTS.
 - APPLY NSF COMPLIANT LOCTITE TO THREADED AREA.
 - APPLY NSF COMPLIANT REMOVABLE (BLUE) LOCTITE TO THREADED AREA.
 - SILVER SOLDER JOINTS SHALL BE FULLY WETTED VIA CAPILLARY ACTION AND COMPLETELY NON-POROUS.

G
L
B
S



ITEM NO.	PART NUMBER	DESCRIPTION	QTY.
1	10739	CARTRIDGE, VALVE 3/8"G RIGHT CLOSING	1
2	10859/00	BODY, HANDSHOWER HOLDER W/ INTEGRATED VOL. CTRL.	1
3	10860/00	ESCUTCHEON, FLANGE	1
4	10861/00	HANDLE, LEVER 10-24 UNC	1
5	10862/00	HIDDEN HUB, HANDSHOWER VOL. CTRL.	1
6	10863/00	SHOWER HOOK, INTEGRATED HANDLE	1
7	11087	SLEEVE FOR PB-THERM PLATE	1
8	11212/00	PLATE, TWO HANDLE, BASIC SERIES	1
9	3-049/00	ASSY, HOSE KIT, HANDSHOWER	1
10	3-410/00	ASSY, HAND SPRAY	1
11	3-441/00	ASSY, LEVER HANDLE, BASIC	1
11.1	3-408/00	ASSY. LEVER HANDLE, BASIC SERIES.	1
11.2	P02035_2/00	ESCUTCHEON, CONTEMPORARY	1
11.3	P02035_1/00	HUB ESCUTCHEON, CONTEMPORARY TOP	1
12	90017	O-RING, 11/16"ID X 13/16"OD X 1/16"THK, AS-568-017	1
13	90021	O-RING, 15/16"ID X 1-1/16"OD X 1/16"THK, AS-568-021	1
14	90025	O-RING, 1-3/16"ID X 1/16"THK, AS-568-025	1
15	92021	HEX KEY 5/64, FOR 8-32 SET SCREW	1
16	92152	SET SCREW, CUP PT. 10-24 UNC X 5/8"L	1
17	P18011/00	CONNECTOR OUTLET 1/2", HOUSING OV10	1

ZONE	REV.	DESCRIPTION	DATE	APPROVED
B4	A	UPDATE HEX KEY	11/10/2021	AMM
REVISIONS				

1261 LOGAN AVENUE
COSTA MESA, CALIFORNIA 92626
PHONE: 714.361.4800
FAX: 714.617.3120

PHYLIRICH[®]
Defining Luxury Since 1959

PROPRIETARY AND CONFIDENTIAL
THE INFORMATION CONTAINED IN THIS DRAWING IS THE SOLE PROPERTY OF PHYLIRICH. ANY REPRODUCTION IN PART OR AS A WHOLE WITHOUT THE WRITTEN PERMISSION OF PHYLIRICH IS PROHIBITED.
DO NOT SCALE DRAWING

BIDET SET, WALL MOUNTED, LEVER TUBULAR, BASIC

SIZE A	ASM/PRT NO. 130-65/00	REV A
SCALE: 1:4.5	WEIGHT: lbs.	SHEET 1 OF 2